



OVER 60?

Secure this property
for up to **59% less!**

Guide Price
£260,000

Freehold

2x  1x  1x 

**Porters Close,
Petteridge Lane,
Matfield, Tonbridge,
Kent, TN12**

Wards
Helping you move forwards



Main features

- Modern open plan living space and new kitchen
- Private rear garden with large garden room
- Allocated parking
- Situated in quiet cul-de-sac in the sought after village of Matfield
- Within a short drive of mainline train station

Accommodation

GROUND FLOOR

Entrance Hall

Kitchen/Lounge: 24'3 x 12'0 (7.40m x 3.66m)

Conservatory: 9'7 x 9'3 (2.92m x 2.82m)

FIRST FLOOR

Landing

Bedroom 1: 12'0 x 9'5 (3.66m x 2.87m)

Bedroom 2: 12'0 x 7'6 (3.66m x 2.29m)

Bathroom: 6'4 x 5'5 (1.93m x 1.65m)

OUTSIDE

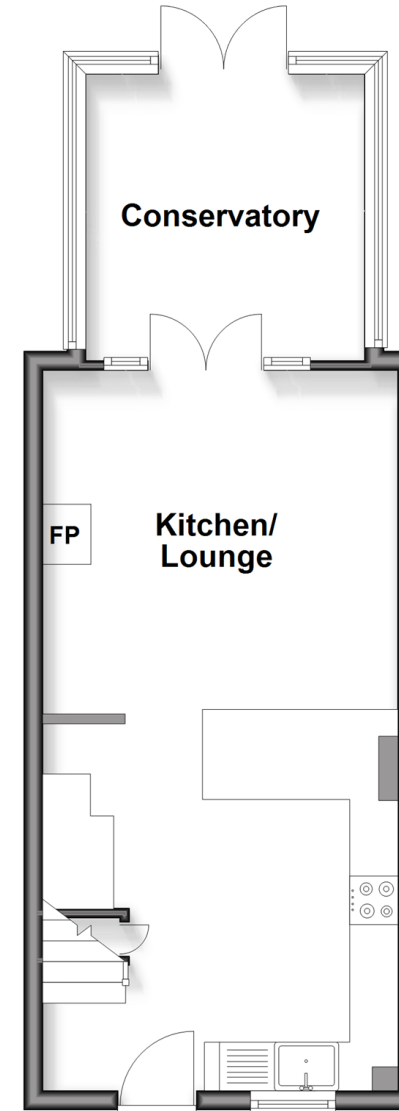
Off Road Parking

Garden

Garden room

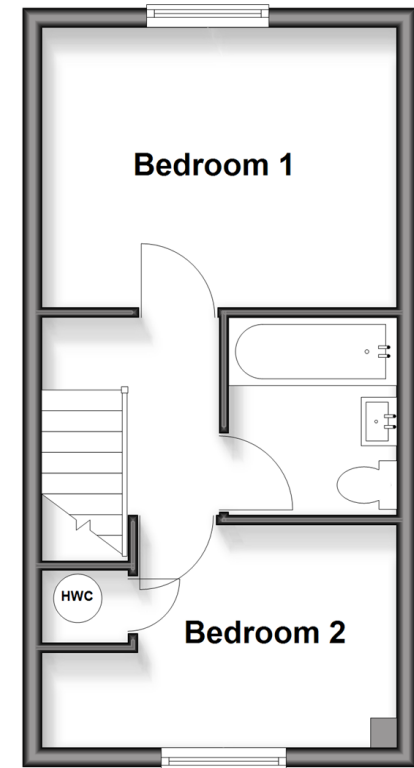
Ground Floor

Approx. 36.1 sq. metres (388.8 sq. feet)



First Floor

Approx. 27.3 sq. metres (293.9 sq. feet)



Call Paddock Wood - 01892 836877 ■ wardsokent.co.uk

- Legal advice should be taken to verify fixtures/fittings, planning, alterations and/or lease details
- Appliances & services are untested, dimensions are approximate and floor plans are not to scale
- Through a Homewise Home For Life Plan people aged 60+ can secure this property for up to 50% less, by purchasing a Lifetime Lease.



13627062/20251115/LF/GD