



**Price**  
**£675,000**

**Freehold**

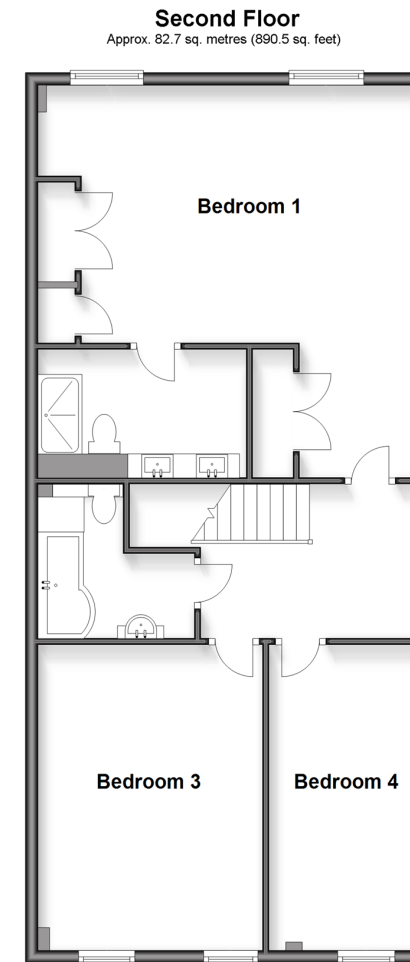
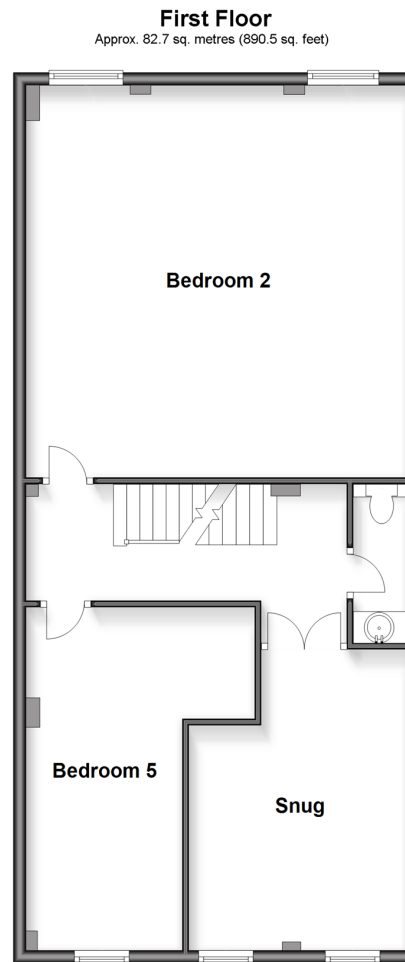
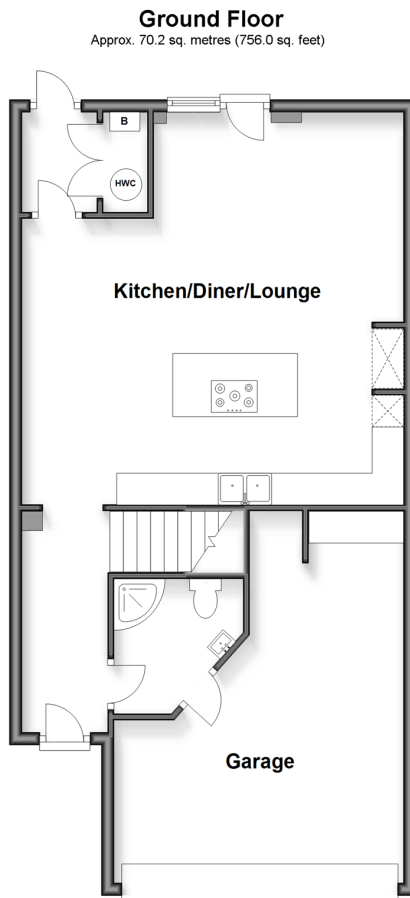
5x  4x  2x 

**Hopgarden Oast, Oast  
Court, Yalding,  
Maidstone, Kent, ME18**

**OVER 60?**

Secure this property  
for up to **59% less!**

*Wards*  
Helping you move forwards



## Accommodation

### GROUND FLOOR

Entrance Hall  
Kitchen/Diner: 19'8 x 19'3 (6.00m x 5.87m)  
Utility Room  
Cloakroom: 8'2 x 2'8 (2.49m x 0.81m)  
Lounge: 15'2 x 11'4 (4.63m x 3.46m)  
WC & Dog Shower: 6'8 x 6'7 (2.03m x 2.01m)  
Garage

### FIRST FLOOR

Landing  
Bedroom 3: 17'6 x 8'0 (5.34m x 2.44m)

Bedroom 2: 20'0 x 20'0 (6.10m x 6.10m)

Bedroom 4: 15'5 x 11'9 (4.70m x 3.58m)

Bedroom 5: 15'6 x 7'8 (4.73m x 2.34m)

### SECOND FLOOR

Bedroom 1: 19'9 x 12'6 (6.02m x 3.81m)

En suite Bedroom 1: 7'9 x 5'7 (2.36m x 1.70m)

### OUTSIDE

Garden  
Driveway





## Main features

- Spacious terraced property is located down a quiet road
- Outstanding views to the rear
- Beautifully renovated throughout to an incredible standard
- Spread over 3 floors, this unique property is unlike any other terraced property
- Large private garden to the rear



### Nearest Schools

Primary Schools: Yalding, St Peter and St Paul C of E Voluntary Controlled Primary Sch 0.2 miles, Hunton C of E Primary 1.3 miles, Laddingford St Mary's C of E Voluntary Controlled Primary 1.5 miles



### Transport Information

Train Stations: Yalding 0.5 miles, Watlington 2.0 miles, Beltring 2.0 miles



### Address

Hopgarden Oast, Oast Court, Yalding, Maidstone, Kent, ME18



### Directions

For directions to this property please contact us.





Call Paddock Wood Branch 01892 836877 ■ [wardsofkent.co.uk](http://wardsofkent.co.uk)



- Legal advice should be taken to verify fixtures/fittings, planning, alterations and/or lease details
- Appliances & services are untested, dimensions are approximate and floor plans are not to scale
- Through a Homewise Home For Life Plan people aged 60+ can secure this property for up to 59% less, by purchasing a Lifetime Lease.



13627331/20250531/LF/GD