



Price
£750,000

Freehold

5x  3x  2x 

**Bow Road,
Waterringbury,
Maidstone, Kent, ME18**

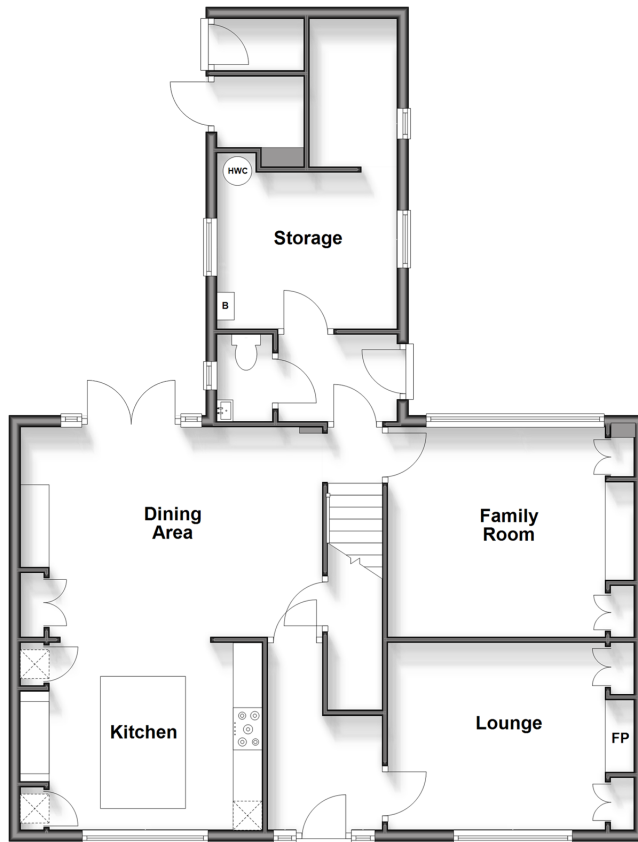
OVER 60?

Secure this property
for up to **59% less!**

Wards
Helping you move forwards

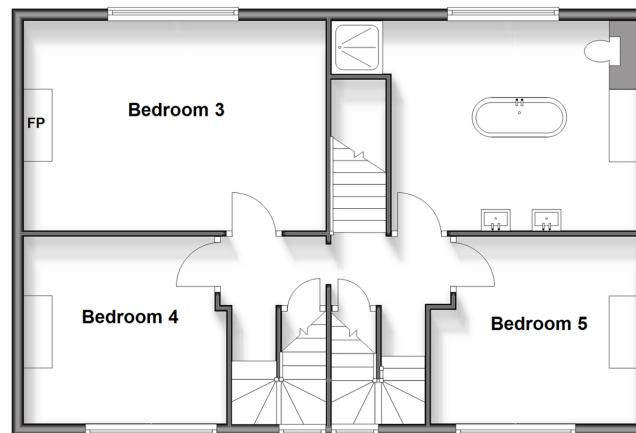
Ground Floor

Approx. 96.4 sq. metres (1037.8 sq. feet)



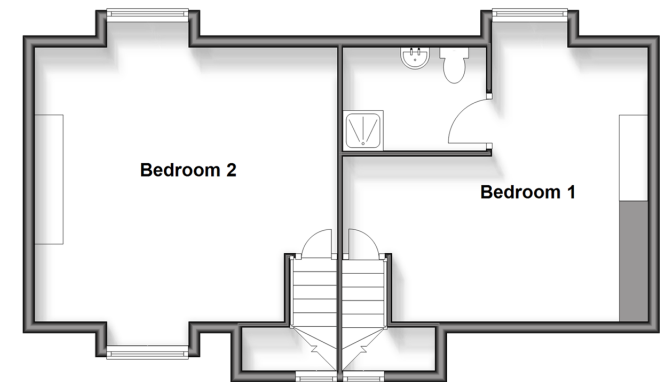
First Floor

Approx. 74.3 sq. metres (799.6 sq. feet)



Second Floor

Approx. 55.2 sq. metres (594.0 sq. feet)



Accommodation

GROUND FLOOR

Entrance Hall

Cloakroom

Storage

Lounge: 13'9 x 10'7 (4.19m x 3.23m)

Dining Area: 17'2 x 11'9 (5.24m x 3.58m)

Kitchen: 12'5 x 10'7 (3.79m x 3.23m)

Family Room: 12'9 x 11'9 (3.89m x 3.58m)

FIRST FLOOR

Landing

Bedroom 3: 17'8 x 13'2 (5.39m x 4.02m)

Bedroom 4: 10'8 x 10'5 (3.25m x 3.18m)

Bedroom 5: 11'7 x 10'7 (3.53m x 3.23m)

Bathroom: 12'7 x 11'8 (3.84m x 3.56m)

SECOND FLOOR

Bedroom 1: 15'3 x 11'9 (4.65m x 3.58m)

En suite Bedroom 1

Bedroom 2: 16'3 x 14'5 (4.96m x 4.40m)

OUTSIDE

Garden

Off Road Parking



Main features

- Breathtaking views of the surrounding countryside
- Large private rear garden with multiple dining areas and fully powered summer house
- Ample parking for multiple cars
- Situated a short distance from the station, Primary School, and Grammar Schools
- Beautifully renovated throughout



Nearest Schools

Primary Schools: Watlingbury C of E Primary 0.1 miles, The Discovery School 1.4 miles, Kings Hill School 1.6 miles

Secondary Schools: The Malling School 2.7 miles, Bower Grove School 3.1 miles, Oakwood Park Grammar School



Transport Information

Train Stations: Watlingbury 0.2 miles, Yalding 1.7 miles, East Farleigh 2.8 miles



Address

Bow Road, Watlingbury, Maidstone, Kent, ME18



Directions

For directions to this property please contact us.



Wards
Helping you move forwards

Call Paddock Wood Branch 01892 836877 ■ wardsofkent.co.uk



- Legal advice should be taken to verify fixtures/fittings, planning, alterations and/or lease details
- Appliances & services are untested, dimensions are approximate and floor plans are not to scale
- Through a Homewise Home For Life Plan people aged 60+ can secure this property for up to 59% less, by purchasing a Lifetime Lease.



12401198/20250205/LF/GD