



Price
£525,000

Freehold

4x  2x  1x 

**Orchard Way,
Horsmonden,
Tonbridge, Kent, TN12**

OVER 60?

Secure this property
for up to **59% less!**

Wards
Helping you move forwards



Main features

- A fantastic renovation opportunity to create the perfect family home
- Large private garden to the rear with patio the width of the house
- Situated in sought after cul-de-sac close to local primary school
- Offered chain free
- Ample parking in addition to a garage

Accommodation

GROUND FLOOR

Entrance Hall

Lounge/Diner: 21'8 x 17'0 (6.61m x 5.19m)

Kitchen: 12'2 x 11'5 (3.71m x 3.48m)

Cloakroom

FIRST FLOOR

Landing

Bedroom 1: 11'5 x 10'8 (3.48m x 3.25m)

Bedroom 2: 10'0 x 9'6 (3.05m x 2.90m)

Bedroom 3: 10'0 x 9'9 (3.05m x 2.97m)

Bedroom 4: 8'4 x 6'9 (2.54m x 2.06m)

Bathroom

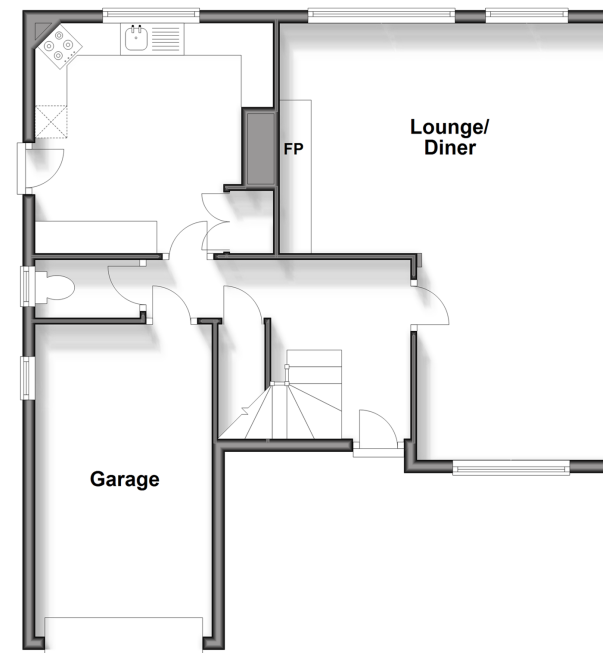
OUTSIDE

Driveway & Garage

Garden

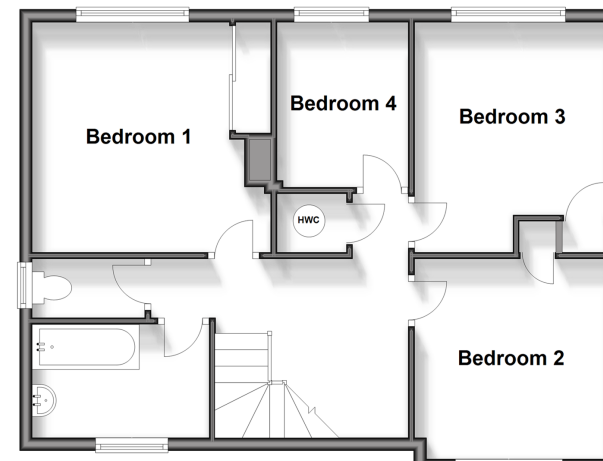
Ground Floor

Approx. 67.8 sq. metres (730.3 sq. feet)



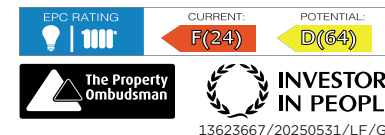
First Floor

Approx. 59.2 sq. metres (637.7 sq. feet)



Call Paddock Wood - 01892 836877 ■ wardsofkent.co.uk

- If buying to let, the energy rating will need to be improved to at least 'E' rating before you can let the property
- Legal advice should be taken to verify fixtures/fittings, planning, alterations and/or lease details
- Appliances & services are untested, dimensions are approximate and floor plans are not to scale
- Through a Homewise Home For Life Plan people aged 60+ can secure this property for up to 59% less, by purchasing a Lifetime Lease.



13623667/20250531/LF/GD