



Price
£400,000

Freehold

4x  3x  1x 

**School View, Chidley
Cross Road, East
Peckham, Tonbridge,
Kent, TN12**

OVER 60?

Secure this property
for up to **59% less!**



Video Tour available

Wards
Helping you move forwards



Main features

- Offered chain free
- Spacious home spread over 3 levels
- Large driveway and countryside views to the front
- Private garden to the rear
- Newly built home ready to move in to!

Accommodation

GROUND FLOOR

Entrance Hall
 Kitchen/Diner: 21'3 x 8'1 (6.48m x 2.47m)
 Cloakroom: 5'5 x 3'0 (1.65m x 0.92m)
 Shower Room: 7'0 x 2'9 (2.14m x 0.84m)
 Lounge: 16'5 x 14'8 (5.01m x 4.47m)

FIRST FLOOR

Landing
 Bedroom 2: 10'7 x 8'4 (3.23m x 2.54m)
 Bedroom 3: 8'9 x 7'4 (2.67m x 2.24m)
 Bedroom 4: 10'0 x 7'0 (3.05m x 2.14m)
 Bathroom: 7'2 x 5'6 (2.19m x 1.68m)

SECOND FLOOR

Bedroom 1: 23'7 x 11'5 (7.19m x 3.48m)
 Bedroom 1 En suite Shower Room

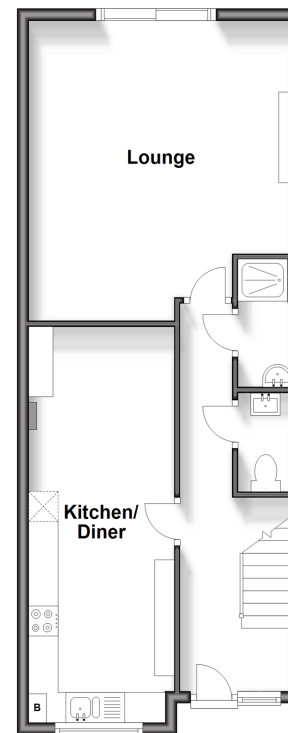
OUTSIDE

Off Road Parking
 Garden

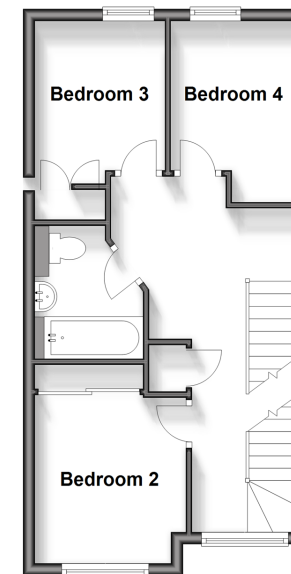
Call Paddock Wood - 01892 836877 ■ wardsof Kent.co.uk

- Legal advice should be taken to verify fixtures/fittings, planning, alterations and/or lease details
- Appliances & services are untested, dimensions are approximate and floor plans are not to scale
- Through a Homewise Home For Life Plan people aged 60+ can secure this property for up to 59% less, by purchasing a Lifetime Lease.

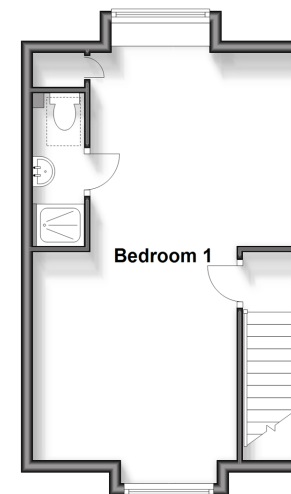
Ground Floor
 Approx. 51.1 sq. metres (549.7 sq. feet)



First Floor
 Approx. 39.2 sq. metres (421.6 sq. feet)



Second Floor
 Approx. 31.8 sq. metres (341.9 sq. feet)



13627254/20250304/LF/GD