



**Price**  
**£400,000**

**Freehold**

4x  3x  1x 

**Church View, Chidley**  
**Cross Road, East**  
**Peckham, Tonbridge,**  
**Kent, TN12**

**OVER 60?**

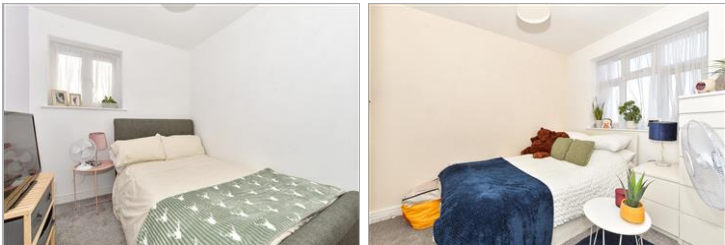
Secure this property  
for up to **59% less!**



Video Tour available

**Wards**  
Helping you move forwards





## Main features

- Offered chain free
- Spacious home spread over 3 levels
- Large driveway and countryside views to the front
- Private garden to the rear
- Newly built home ready to move in to!

## Accommodation

### GROUND FLOOR

Entrance Hall  
 Kitchen/Diner: 21'3 x 8'1 (6.48m x 2.47m)  
 Cloakroom: 5'5 x 3'0 (1.65m x 0.92m)  
 Shower Room: 5'5 x 2'9 (1.65m x 0.84m)  
 Lounge: 16'5 x 14'8 (5.01m x 4.47m)

### FIRST FLOOR

Landing  
 Bedroom 2: 10'7 x 8'4 (3.23m x 2.54m)  
 Bedroom 3: 8'9 x 7'4 (2.67m x 2.24m)  
 Bedroom 4: 10'0 x 7'0 (3.05m x 2.14m)  
 Bathroom

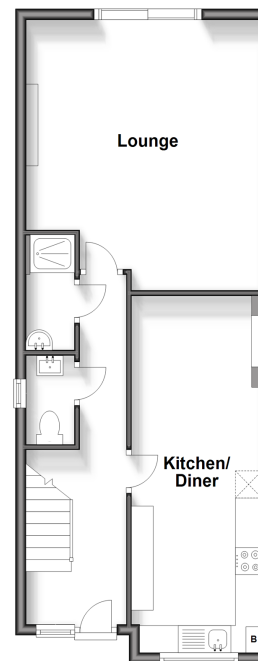
### SECOND FLOOR

Bedroom 1: 23'7 x 11'5 (7.19m x 3.48m)  
 Bedroom 1 En suite Shower Room

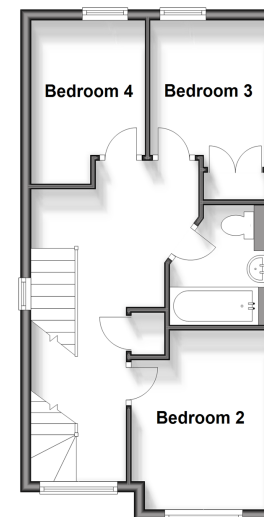
### OUTSIDE

Off Road Parking  
 Garden

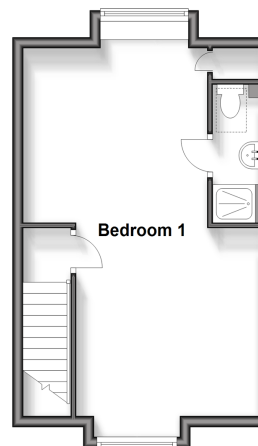
**Ground Floor**  
 Approx. 50.6 sq. metres (544.5 sq. feet)



**First Floor**  
 Approx. 39.2 sq. metres (421.6 sq. feet)



**Second Floor**  
 Approx. 31.8 sq. metres (341.9 sq. feet)



**Call Paddock Wood - 01892 836877 ■ [wardsof Kent.co.uk](http://wardsof Kent.co.uk)**

- Legal advice should be taken to verify fixtures/fittings, planning, alterations and/or lease details
- Appliances & services are untested, dimensions are approximate and floor plans are not to scale
- Through a Homewise Home For Life Plan people aged 60+ can secure this property for up to 59% less, by purchasing a Lifetime Lease.