



Price
£375,000

Freehold

4x  1x  2x 

**Glebe Meadow,
Wateringbury,
Maidstone, Kent, ME18**

OVER 60?

Secure this property
for up to **59% less!**

Wards
Helping you move forwards



Main features

- Off road parking for 2 cars
- Large rear garden with outhouse & side access
- Spacious, newly refurbished home
- Short walk from Watlington train station, with local bus route nearby
- Well presented family home in a cul-de-sac position

Accommodation

GROUND FLOOR

Entrance Hall

Lounge: 14'8 x 12'5 (4.47m x 3.79m)

Kitchen: 28'1 x 10'9 (8.57m x 3.28m)

Conservatory: 13'1 x 11'3 (3.99m x 3.43m)

FIRST FLOOR

Landing

Bedroom 1: 14'3 x 9'7 (4.35m x 2.92m)

Bedroom 2: 12'5 x 7'0 (3.79m x 2.14m)

Bedroom 3: 10'5 x 10'0 (3.18m x 3.05m)

Bedroom 4: 9'9 x 9'9 (2.97m x 2.97m)

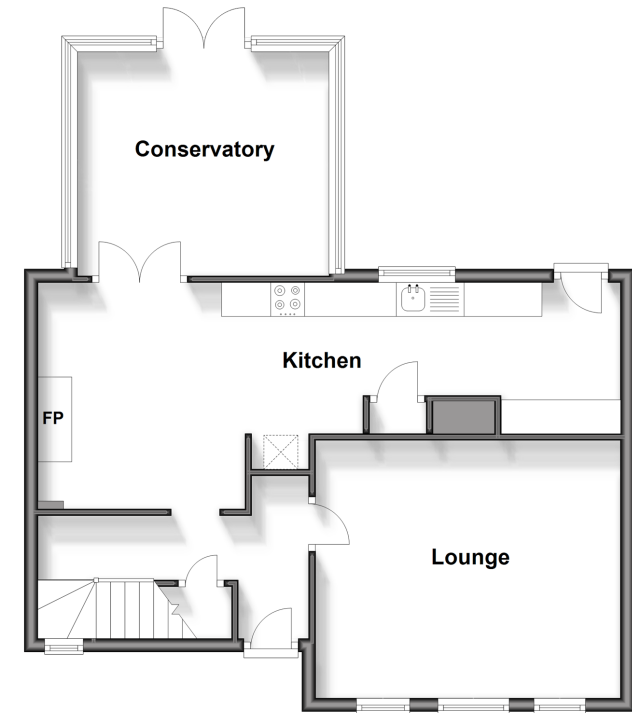
Bathroom

OUTSIDE

Large Rear Garden

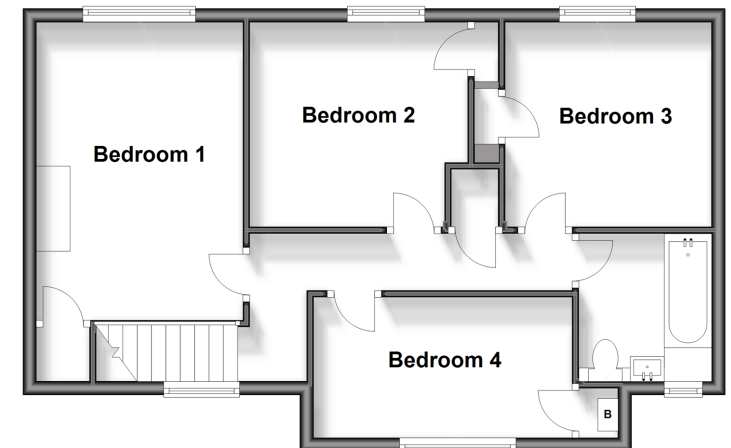
Driveway

Ground Floor
Approx. 38.1 sq. metres (410.0 sq. feet)



First Floor

Approx. 56.5 sq. metres (607.8 sq. feet)



Call Paddock Wood - 01892 836877 ■ wardsof Kent.co.uk

- Legal advice should be taken to verify fixtures/fittings, planning, alterations and/or lease details
- Appliances & services are untested, dimensions are approximate and floor plans are not to scale
- Through a Homewise Home For Life Plan people aged 60+ can secure this property for up to 59% less, by purchasing a Lifetime Lease.



13626575/20241005/LF/GD