



OVER 60?

Secure this property
for up to **59% less!**

Price

£375,000

Freehold

3x  2x  1x 

**The Shires, Paddock
Wood, Tonbridge, Kent,
TN12**

Wards
Helping you move forwards



Main features

- Well presented private garden
- Garage and off road parking
- A quiet estate a short walk from local amenities, schools, and Paddock Wood mainline station
- Conservatory to the rear to enjoy all year round
- Perfect investment opportunity or first home

Accommodation

GROUND FLOOR

Entrance Hall
 Lounge: 15'1 (4.60m) x 14'9 (4.50m) narrowing to 11'1 (3.38m)
 Kitchen: 9'10 x 8'0 (3.00m x 2.44m)
 Conservatory: 14'0 x 8'1 (4.27m x 2.47m)
 Cloakroom

FIRST FLOOR

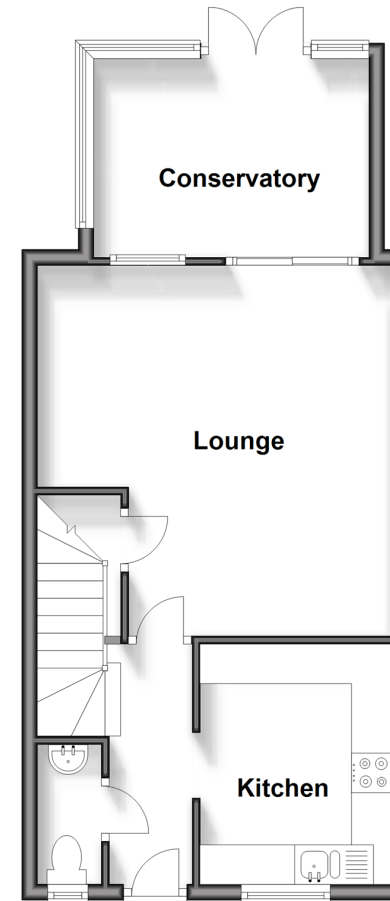
Landing
 Bedroom 1: 14'9 (4.50m) narrowing to 11'1 (3.38m) x 8'8 (2.64m)
 Bedroom 2: 11'7 x 8'0 (3.53m x 2.44m)
 Bedroom 3: 8'6 (2.59m) narrowing to 8'0 (2.44m) x 6'6 (1.98m)
 Bathroom

OUTSIDE

Garden
 Garage & Off Road Parking

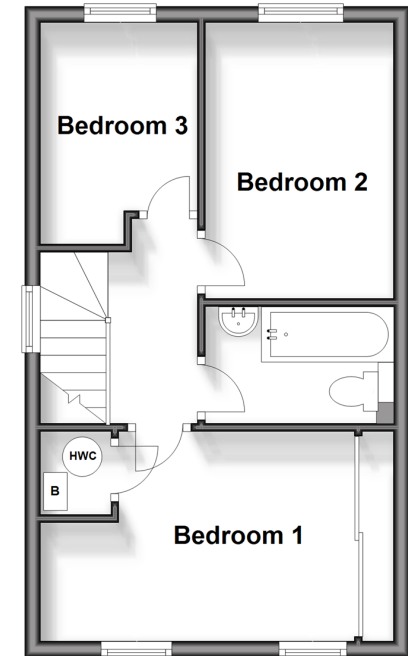
Ground Floor

Approx. 44.3 sq. metres (477.0 sq. feet)



First Floor

Approx. 35.2 sq. metres (378.6 sq. feet)



Call Paddock Wood - 01892 836877 ■ wardsof Kent.co.uk

- Legal advice should be taken to verify fixtures/fittings, planning, alterations and/or lease details
- Appliances & services are untested, dimensions are approximate and floor plans are not to scale
- Through a Homewise Home For Life Plan people aged 60+ can secure this property for up to 59% less, by purchasing a Lifetime Lease.



13626816/20240713/MB/GD