



OVER 60?

Secure this property
for up to **59% less!**

Price
£375,000

Freehold

3x  1x  2x 

**Laxton Gardens,
Paddock Wood,
Tonbridge, Kent, TN12**

Wards
Helping you move forwards



Main features

- **Converted garage, and off road parking**
- **Situated in the heart of the village, a short distance from mainline station with direct links to London**
- **Well presented private garden**
- **Large living space with separate dining area**

Accommodation

GROUND FLOOR

Entrance Hall

Lounge: 14'9 x 12'3 (4.50m x 3.74m)

Dining Room: 10'2 x 9'9 (3.10m x 2.97m)

Kitchen: 9'3 x 8'0 (2.82m x 2.44m)

Conservatory: 17'4 x 4'4 (5.29m x 1.32m)

FIRST FLOOR

Landing

Bedroom 1: 13'5 x 10'4 (4.09m x 3.15m)

Bedroom 2: 10'6 x 9'1 (3.20m x 2.77m)

Bedroom 3: 9'0 x 7'6 (2.75m x 2.29m)

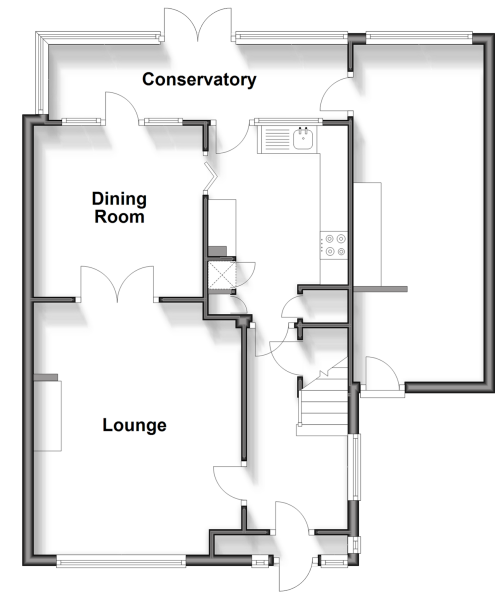
Bathroom

OUTSIDE

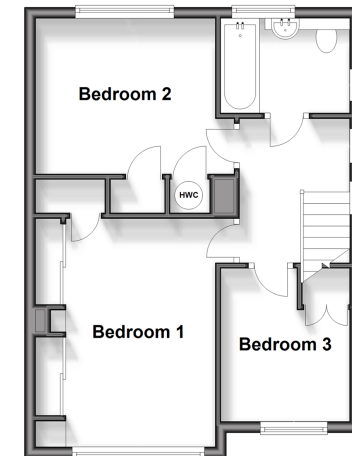
Garage & Driveway

Rear Garden

Ground Floor
Approx. 66.0 sq. metres (710.7 sq. feet)



First Floor
Approx. 42.3 sq. metres (455.8 sq. feet)



Call Paddock Wood - 01892 836877 ■ wardsof Kent.co.uk

- Legal advice should be taken to verify fixtures/fittings, planning, alterations and/or lease details
- Appliances & services are untested, dimensions are approximate and floor plans are not to scale
- Through a Homewise Home For Life Plan people aged 60+ can secure this property for up to 59% less, by purchasing a Lifetime Lease.



13627131/20250205/LF/GD