

Price

£425,000

Freehold

3x  3x  1x 

**Pine Tree Court,
Maidstone Road,
Paddock Wood, Kent,
TN12**

Wards
Helping you move forwards



Main features

- Six stunning new builds with large rear gardens
- Located just a short distance from Paddock Wood station with direct links to London
- Allocated parking
- Finished to a high standard throughout
- *STAMP DUTY PAID T&C'S APPLY*

Accommodation

GROUND FLOOR

Kitchen/Diner: 15'5 x 11'1 (4.70m x 3.38m)
Cloakroom

FIRST FLOOR

Lounge: 15'6 x 15'2 (4.73m x 4.63m)
Bedroom 3: 9'10 x 8'8 (3.00m x 2.64m)
Bathroom

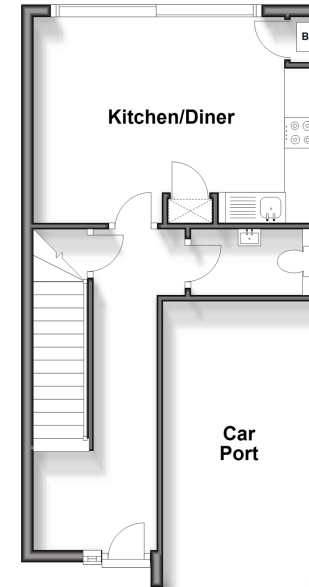
SECOND FLOOR

Bedroom 1: 13'9 x 11'7 (4.19m x 3.53m)
En-suite
Bedroom 2: 12'1 x 9'9 (3.69m x 2.97m)

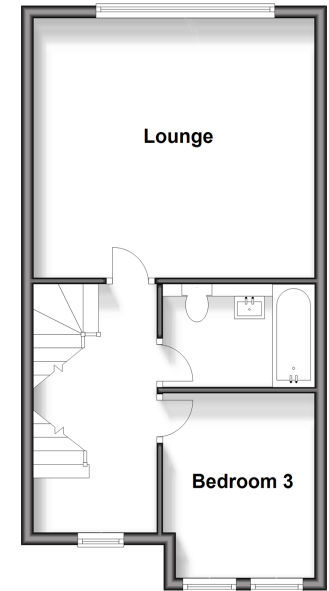
OUTSIDE

Rear Garden
Car Port
Off Road Parking

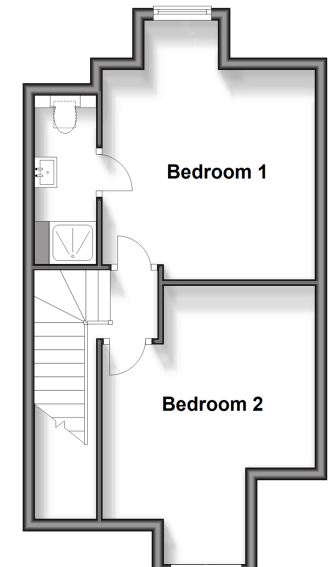
Ground Floor
Approx. 29.9 sq. metres (321.3 sq. feet)



First Floor
Approx. 41.1 sq. metres (441.9 sq. feet)



Second Floor
Approx. 34.9 sq. metres (375.7 sq. feet)



Call Paddock Wood - 01892 836877 ■ wardsokent.co.uk

- Legal advice should be taken to verify fixtures/fittings, planning, alterations and/or lease details
- Appliances & services are untested, dimensions are approximate and floor plans are not to scale



13627101/20240904/ST/GD