



Price
£700,000

Freehold

4x  2x  2x 

**Redpoll Walk, Paddock
Wood, Tonbridge, Kent,
TN12**

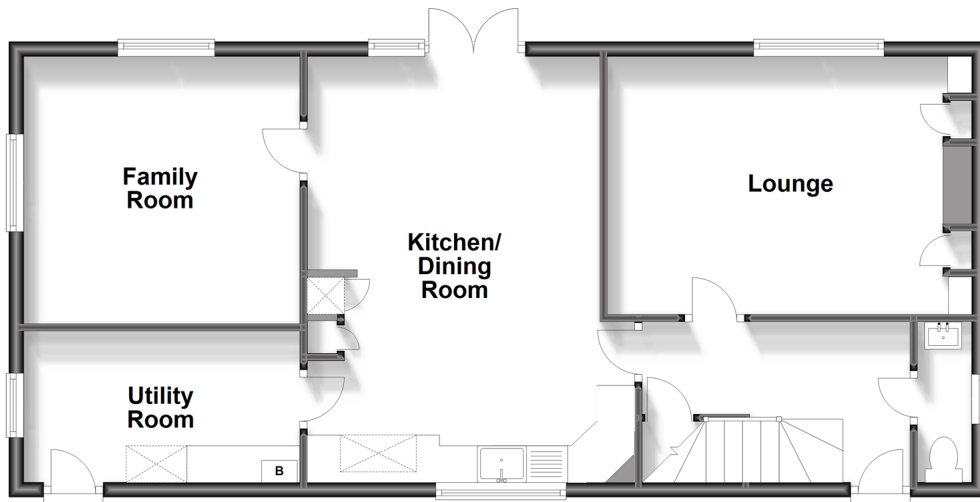
OVER 60?

Secure this property
for up to **59% less!**

Wards
Helping you move forwards

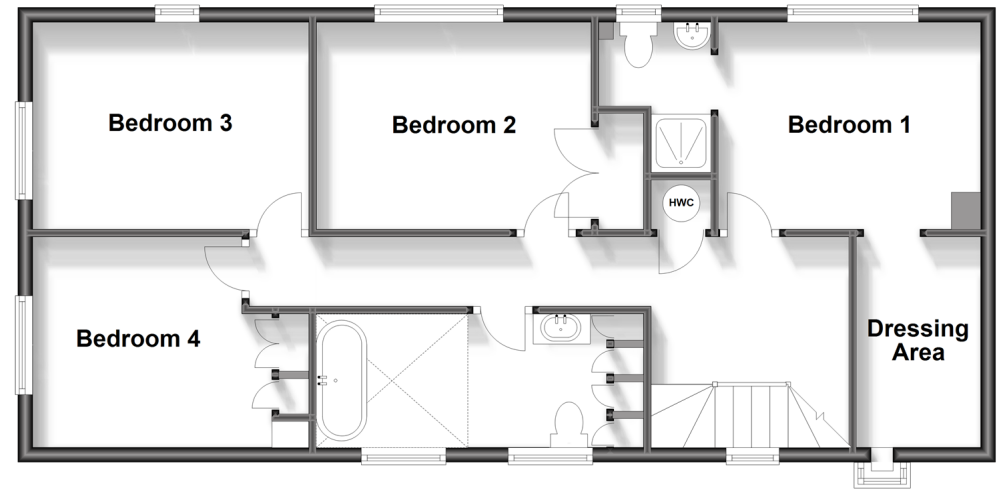
Ground Floor

Approx. 73.8 sq. metres (794.7 sq. feet)



First Floor

Approx. 73.9 sq. metres (795.2 sq. feet)



Accommodation

GROUND FLOOR

Entrance Hall

Cloakroom

Lounge: 16'1 (4.91m) narrowing to 14'10 (4.52m) x 11'6 (3.51m)

Kitchen/Dining Room: 18'10 (5.74m) x 14'6 (4.42m) narrowing to 13'0 (3.97m)

Family Room: 12'0 x 11'9 (3.66m x 3.58m)

Utility Room: 12'3 x 6'7 (3.74m x 2.01m)

FIRST FLOOR

Landing

Bedroom 1: 12'3 x 9'7 (3.74m x 2.92m)

En suite Bedroom 1 Shower Room: 7'0 (2.14m) narrowing to 4'0 (1.22m) x 4'6 (1.37m)

Dressing Room ex-Bedroom 5: 9'2 x 5'7 (2.80m x 1.70m)

Bedroom 2: 12'4 (3.76m) narrowing to 9'2 (2.80m) x 9'3 (2.82m)

Bedroom 3: 12'2 x 9'7 (3.71m x 2.92m)

Bedroom 4: 12'3 x 9'4 (3.74m x 2.85m)

Bathroom: 14'7 x 6'0 (4.45m x 1.83m)

OUTSIDE

Detached Double Garage: 17'9 x 16'8 (5.41m x 5.08m)

Off Road Parking

Front, Side & Rear Gardens



Main features

- A fantastic family home set on a superb corner plot of approx 0.25 Acres
- Double garage and ample parking
- Favoured cul-de-sac location close to schools, shops and station as well as open countryside
- Superb kitchen/dining room plus utility
- Second reception room ideal for larger families or work from home



Nearest Schools

Primary Schools: Paddock Wood Primary 0.4 miles, Brenchley and Matfield 1.4 miles, Capel Primary 2.0 miles. Secondary Schools: Mascalls School 0.2 miles, Kent College Pembury 2.8 miles. Tonbridge, Tunbridge Wells and Maidstone Grammar and Secondary Schools



Transport Information

Train Stations: Paddock Wood 0.7 miles, Beltring 2.2 miles, Yalding 3.9 miles



Address

Redpoll Walk, Paddock Wood, Tonbridge, Kent, TN12



Directions

For directions to this property please contact us.



Wards
Helping you move forwards

Call Paddock Wood Branch 01892 836877 ■ wardsof Kent.co.uk



- Legal advice should be taken to verify fixtures/fittings, planning, alterations and/or lease details
- Appliances & services are untested, dimensions are approximate and floor plans are not to scale
- Through a Homewise Home For Life Plan people aged 60+ can secure this property for up to 59% less, by purchasing a Lifetime Lease.

EPC RATING

CURRENT: D(68) POTENTIAL: C(79)

13626918/20240312/LF/GD