

OVER 60?

Secure this property
for up to **59% less!**



Price

£800,000

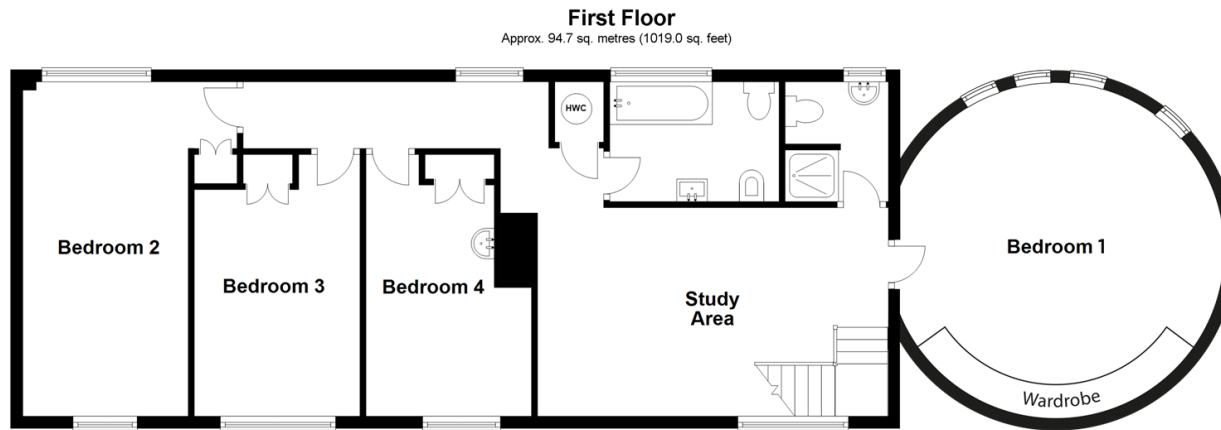
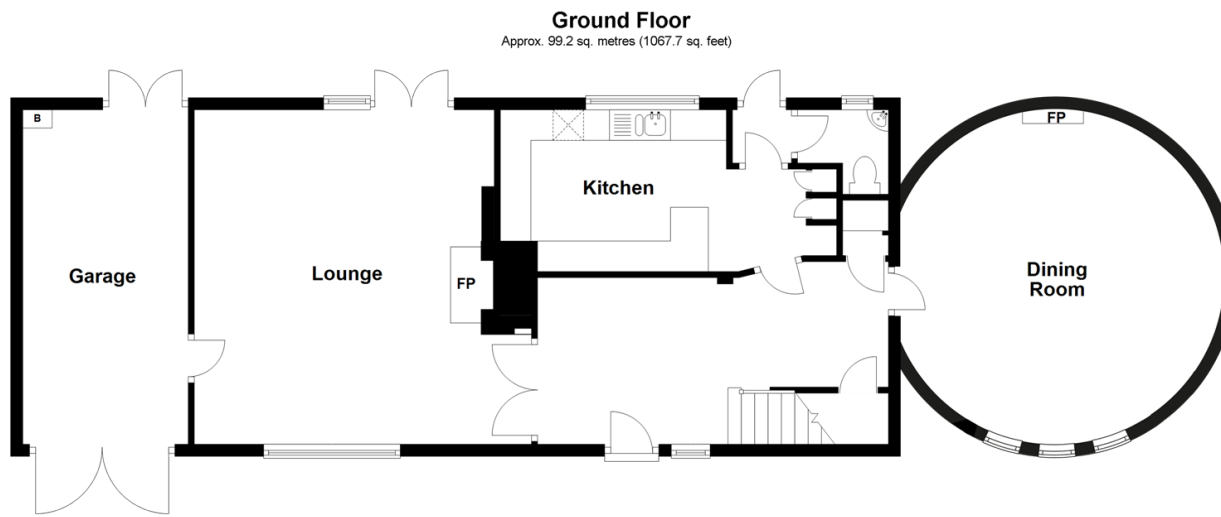
Freehold

4x  2x  2x 

Church Lane, East Peckham, Tonbridge,
Kent, TN12

Wards

Helping you move forwards



Accommodation

GROUND FLOOR

Entrance Hall

Dining Room: 18'0 x 18'0 (5.49m x 5.49m)

Kitchen: 16'2 x 8'7 (4.93m x 2.62m)

Lounge: 18'2 (5.54m) x 18'0 (5.49m) narrowing to 15'6 (4.73m)

Cloakroom

FIRST FLOOR

Landing

Study Area: 11'6 x 9'5 (3.51m x 2.87m)

Bedroom 1: 17'4 x 17'4 (5.29m x 5.29m)

Shower Room : 6'2 x 5'6 (1.88m x 1.68m)

Bedroom 2: 18'0 x 9'0 (5.49m x 2.75m)

Bedroom 3: 12'4 x 9'3 (3.76m x 2.82m)

Bedroom 4: 12'4 (3.76m) x 8'10 (2.69m) narrowing to 7'0 (2.14m)

Bathroom: 9'0 x 6'11 (2.75m x 2.11m)

OUTSIDE

Front and Rear Gardens

Garage: 18'9 x 8'10 (5.72m x 2.69m)

Off Road Parking



Main features

- A beautiful unlisted converted Oast house with long sweeping driveway and gorgeous views over farmland and beyond
- Gorgeous garden adjoining farmland
- Ample parking on driveway plus garage
- Straight out onto country walks
- Lounge with fireplace, dining roundel
- Main roundel bedroom



Nearest Schools

Primary Schools: East Peckham Primary 0.4 miles, Laddingford Primary 1.4 miles, Yalding Primary Sch 1.9 miles
Secondary Schools: Mascalls School 3.3 miles, Kent College Pembury 4.7 miles, Tonbridge and Tunbridge Wells Grammars



Transport Information

Train Stations: Beltring 1.0 miles, Yalding 1.2 miles, Paddock Wood 2.4 miles. Bus stop close by for No.6 to Paddock Wood, Tunbridge Wells and Maidstone.



Address

Church Lane, East Peckham, Tonbridge, Kent, TN12



Directions

For directions to this property please contact us.



Wards
Helping you move forwards

Call Paddock Wood Branch 01892 836877 ■ wardsofkent.co.uk



- If buying to let, the energy rating will need to be improved to at least 'E' rating before you can let the property
- Appliances & services are untested, dimensions are approximate and floor plans are not to scale

- Legal advice should be taken to verify fixtures/fittings, planning, alterations and/or lease details
- Through a Homewise Home For Life Plan people aged 60+ can secure this property for up to 59% less, by purchasing a Lifetime Lease.



13626868/20240517/LF/GW