



**Price**  
**£320,000**

**Freehold**

5x  2x  2x 

**Nesbit Road, St Marys  
Bay, Romney Marsh,  
Kent, TN29**

**OVER 60?**

You could get up to  
**59% off** the price!\*

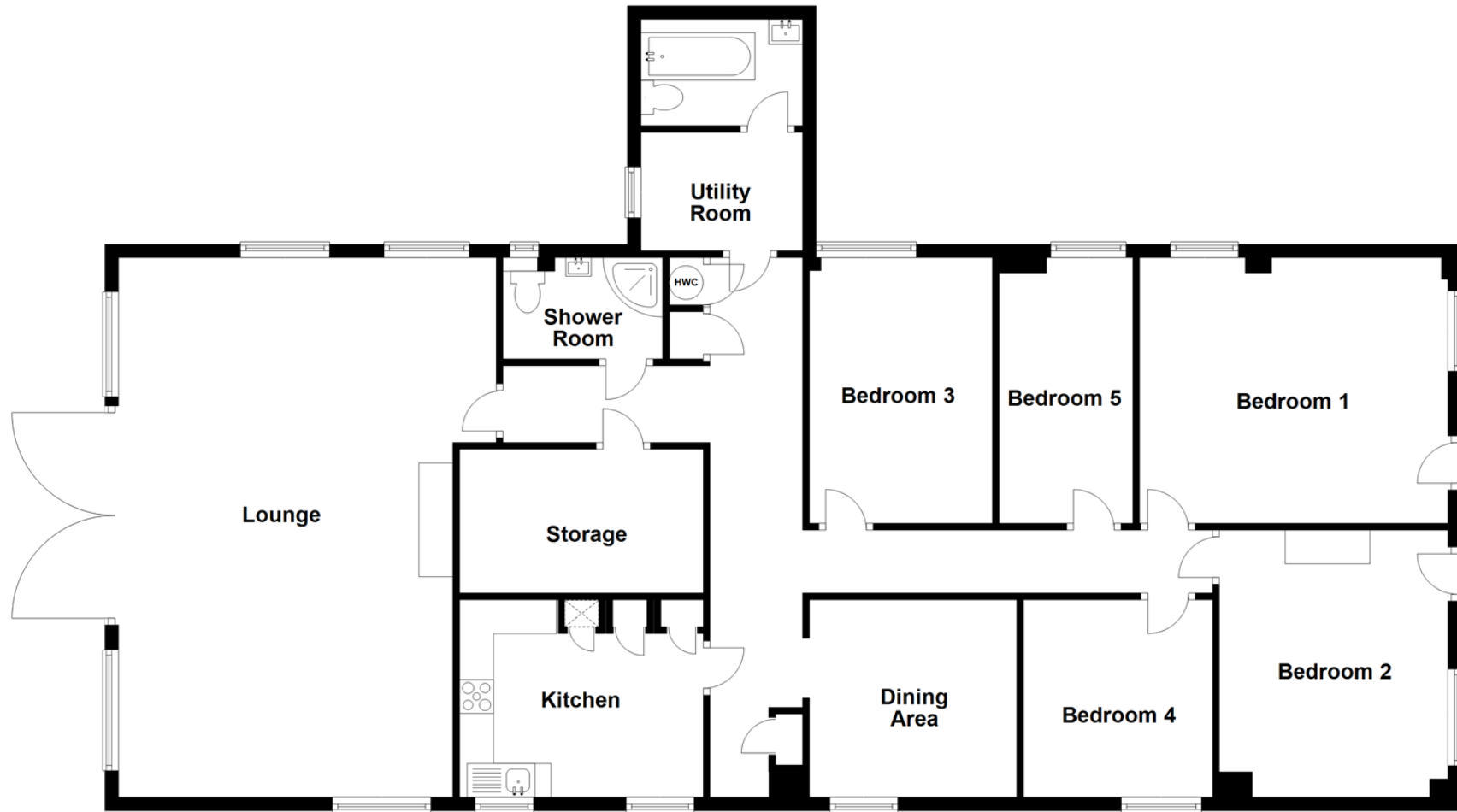


**Video Tour available**

***Wards***  
Helping you move forwards

## Ground Floor

Approx. 164.6 sq. metres (1771.8 sq. feet)



## Accommodation

### GROUND FLOOR

#### Entrance Hall

**Kitchen :** 11'8 x 9'0 (3.56m x 2.75m)

#### Store Room

**Dining Room:** 9'7 x 9'1 (2.92m x 2.77m)

**Bedroom 5:** 12'9 x 9'3 (3.89m x 2.82m)

**Bedroom 3:** 13'0 x 6'5 (3.97m x 1.96m)

**Bedroom 1:** 15'0 x 13'0 (4.58m x 3.97m)

**Bedroom 4:** 9'3 x 9'2 (2.82m x 2.80m)

**Bedroom 2 :** 12'10 x 10'7 (3.91m x 3.23m)

**Utility Room :** 7'9 x 5'9 (2.36m x 1.75m)

#### Bathroom 1

#### Bathroom 2

**Lounge :** 26'7 x 15'0 (8.11m x 4.58m)

### OUTSIDE

**Front & Rear Gardens**





## Main features

- Unique detached bungalow oozing character and charm once the home of E. Nesbit, author of the *The Railway Children*.
- Fireplace & log burner to gather round on those chilly evenings
- Beautiful established garden. Adjacent to the Romney Hythe and Dymchurch light railway
- Handy for the beach and countryside



### Nearest Schools

Primary Schools: Dymchurch Primary 1.4 miles, St Nicholas C of E (Controlled) Primary 2.1 miles, Greatstone Primary 3.3 miles  
Secondary Schools: Marsh Academy 2.0 miles, Brockhill Park Performing Arts College 6.2 miles, Caldecott



### Transport Information

Train Stations: Ham Street 6.5 miles, Appledore 7.1 miles



### Address

Nesbit Road, St Marys Bay, Romney Marsh, Kent, TN29



### Directions

For directions to this property please contact us.





Call New Romney Branch 01797 363745 ■ [wardsofkent.co.uk](https://wardsofkent.co.uk)



- Legal advice should be taken to verify fixtures/fittings, planning, alterations and/or lease details
- Appliances & services are untested, dimensions are approximate and floor plans are not to scale
- Our Homewise partnership offer a 'Home for Life' plan to buyers over 60, granting a lifetime lease for your protection and reducing the purchase price by up to 59%



13523603/20210107/CC/CA