



Guide Price
£390,000

Freehold

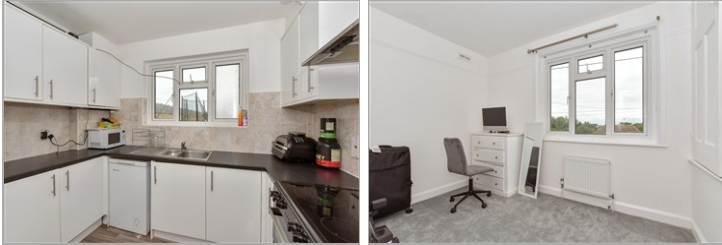
3x  1x  1x 

**Coast Drive, Greatstone,
Kent, TN28**

OVER 60?

Secure this property
for up to **59% less!**

Wards
Helping you move forwards



Main features

- Beach front home with access to the sands at Greatstone
- Scope to extend, alter or improve subject to consents being obtained
- Short walk to shops and amenities
- Short drive to New Romney
- Walking distance to primary school

Accommodation

GROUND FLOOR

Entrance Porch

Reception Hall

Lounge: 15'9 (4.80m) x 12'11 (3.94m)
narrowing to 9'11 (3.02m)

Kitchen : 9'9 x 8'8 (2.97m x 2.64m)

Bathroom

FIRST FLOOR

Landing

Bedroom 1: 15'4 x 10'0 (4.68m x 3.05m)

Bedroom 2: 10'3 x 7'1 (3.13m x 2.16m) plus
3'11 x 3'9 (1.19m x 1.14m)

Bedroom 3: 10'2 x 7'10 (3.10m x 2.39m)

OUTSIDE

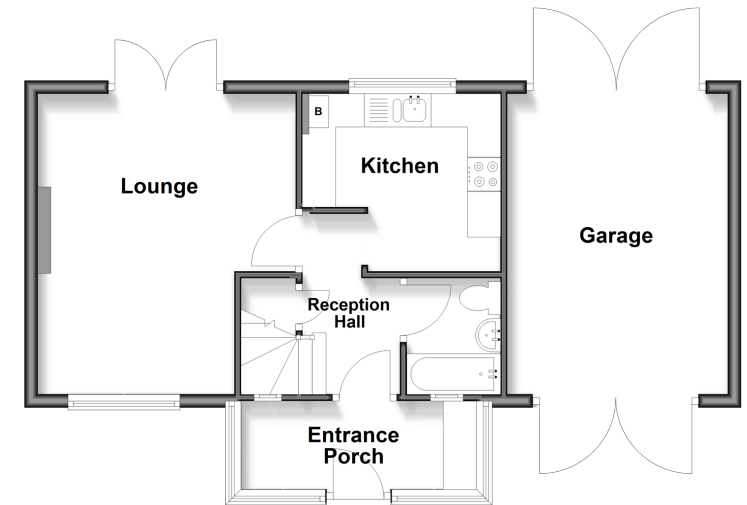
Gardens to Front and Rear

Garage

Off Road Parking

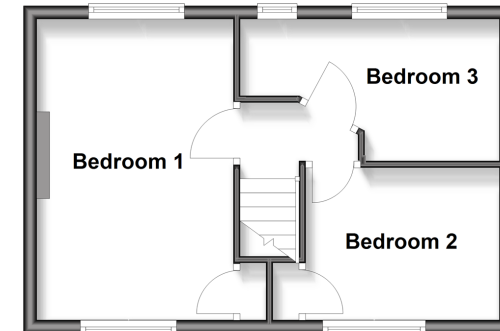
Ground Floor

Approx. 51.9 sq. metres (558.5 sq. feet)



First Floor

Approx. 31.4 sq. metres (338.2 sq. feet)



Call New Romney - 01797 363745 ■ wardsofkent.co.uk

- A private rental licensing scheme applies to some properties in this area, please check with the Local Authority before proceeding
- Legal advice should be taken to verify fixtures/fittings, planning, alterations and/or lease details
- Appliances & services are untested, dimensions are approximate and floor plans are not to scale
- Through a Homewise Home For Life Plan people aged 60+ can secure this property for up to 59% less, by purchasing a Lifetime Lease



13522063/20260110/AH/SRH