



Guide Price
£350,000

Freehold

3x  1x  1x 

**Brissenden Close, New
Romney, Kent, TN28**

OVER 60?

Secure this property
for up to **59% less!**

Wards
Helping you move forwards



Main features

- Stunning much improved modern home with amazing views to the rear
- High-end fittings throughout
- Priced for a quick sale
- Quiet cul-de-sac location
- Central location for shops, schools, amenities and golf course

Accommodation

GROUND FLOOR

Entrance Hall

Lounge: 13'2 x 12'4 (4.02m x 3.76m)

Kitchen: 12'3 x 7'3 (3.74m x 2.21m)

Dining Area: 7'11 x 7'2 (2.41m x 2.19m)

Cloakroom

FIRST FLOOR

Landing

Bedroom 1: 11'1 x 9'3 (3.38m x 2.82m)

Bedroom 2: 12'4 x 11'1 (3.76m x 3.38m)

Bedroom 3: 9'5 x 8'4 (2.87m x 2.54m)

Shower Room

OUTSIDE

Off Road Parking

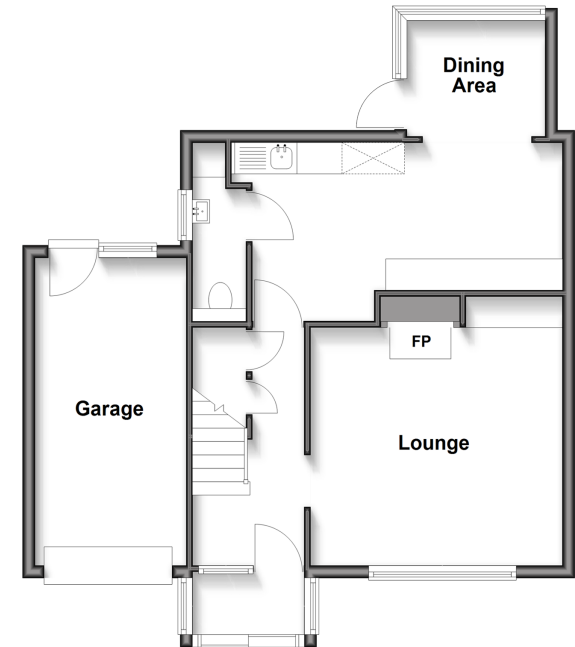
Garage

Front & Rear Gardens

Outbuilding

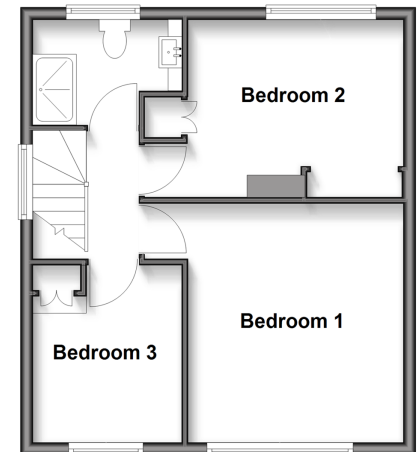
Ground Floor

Approx. 58.9 sq. metres (634.4 sq. feet)



First Floor

Approx. 40.2 sq. metres (432.5 sq. feet)



Call New Romney - 01797 363745 ■ wardsof Kent.co.uk

- Legal advice should be taken to verify fixtures/fittings, planning, alterations and/or lease details
- Appliances & services are untested, dimensions are approximate and floor plans are not to scale
- Through a Homewise Home For Life Plan people aged 60+ can secure this property for up to 59% less, by purchasing a Lifetime Lease.



13525911/20250722/AH/CA