



Guide Price
£250,000

Freehold

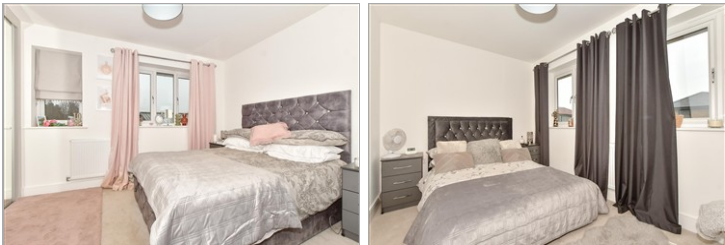
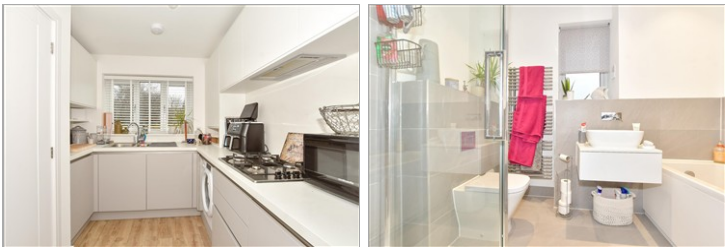
2x  1x  1x 

**Shakespeare Crescent,
New Romney, Kent,
TN28**

OVER 60?

Secure this property
for up to **59% less!**

Wards
Helping you move forwards



Main features

- Lovely home set in a sought after mews location
- Modern decoration throughout
- Handy for the town centre with its shops and amenities
- No onward chain
- Open countryside nearby for those brisk walks

Accommodation

GROUND FLOOR

Entrance Hall

Kitchen: 16'6 x 6'3 (5.03m x 1.91m)

Lounge: 13'8 x 11'6 (4.17m x 3.51m)

Cloakroom

FIRST FLOOR

Landing

Bedroom 1: 11'10 (3.61m) x 10'3 (3.13m) narrowing to 10'0 (3.05m)

Bedroom 2: 13'10 x 8'4 (4.22m x 2.54m)

Bathroom

OUTSIDE

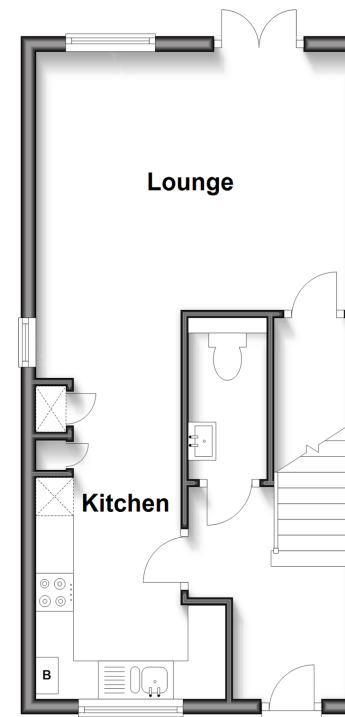
Rear Garden

Shed

2 Allocated Parking Spaces

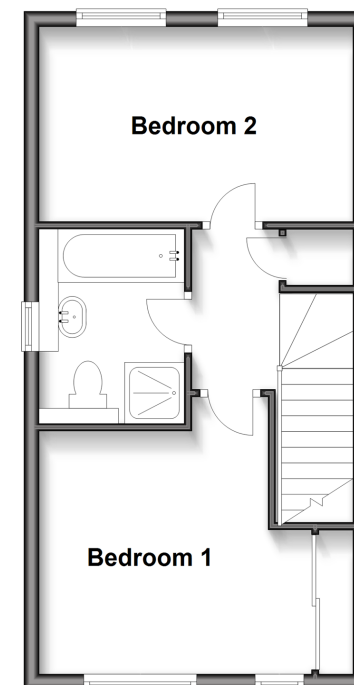
Ground Floor

Approx. 35.5 sq. metres (382.0 sq. feet)



First Floor

Approx. 35.5 sq. metres (382.0 sq. feet)



Call New Romney - 01797 363745 ■ wardsofkent.co.uk

- A private rental licensing scheme applies to some properties in this area, please contact us before proceeding
- Legal advice should be taken to verify fixtures/fittings, planning, alterations and/or lease details
- Appliances & services are untested, dimensions are approximate and floor plans are not to scale
- Through a Homewise Home For Life Plan people aged 60+ can secure this property for up to 50% less, by purchasing a Lifetime Lease.



13525793/20251014/MMJ/SRH