



Guide Price
£270,000

Freehold

2x  1x  1x 

**St. Mary's Gardens,
Dymchurch, Romney
Marsh, Kent, TN29**

OVER 60?

Secure this property
for up to **59% less!**

Wards
Helping you move forwards



Main features

- Situated on the ever desirable Fairway mews
- No onward chain and priced to sell
- Fabulous large conservatory to enjoy the garden from
- Generous lounge/diner
- Close to shops, supermarket, takeaways and amenities

Accommodation

GROUND FLOOR

Entrance Hall

Lounge: 18'7 x 11'5 (5.67m x 3.48m)

Kitchen: 10'4 x 7'5 (3.15m x 2.26m)

Conservatory: 22'5 x 9'8 (6.84m x 2.95m)

Bedroom 1: 12'3 x 10'9 (3.74m x 3.28m)

Bedroom 2: 10'1 x 9'4 (3.08m x 2.85m)

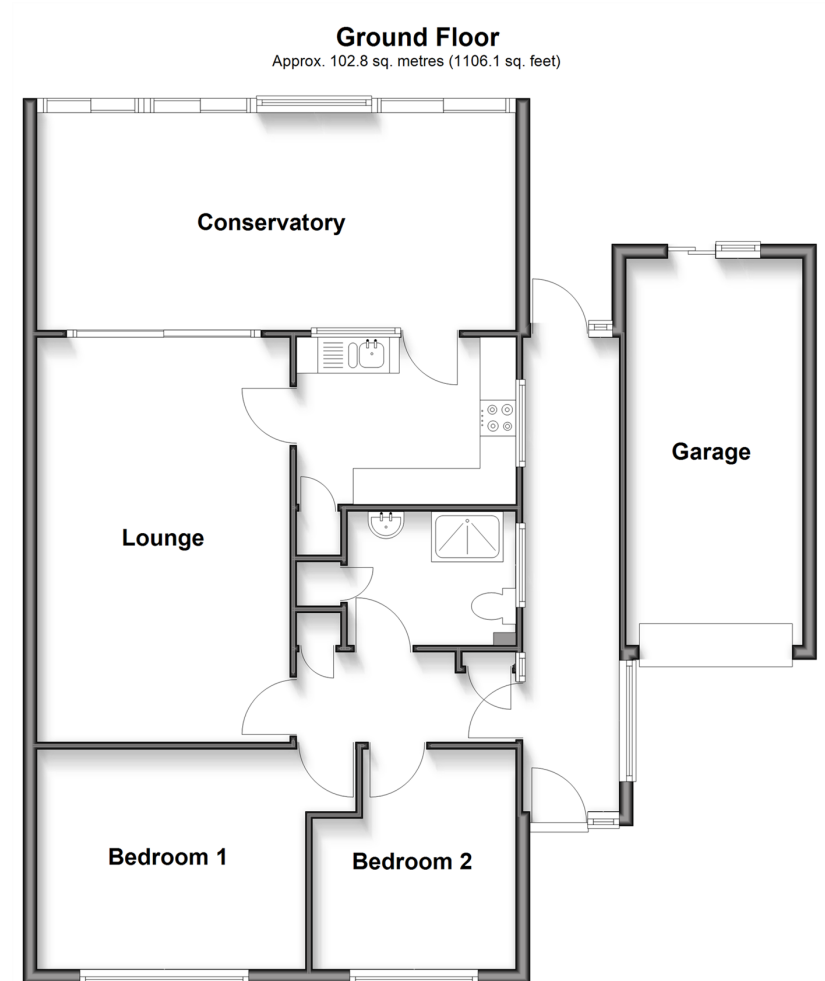
Shower Room

OUTSIDE

Off Road Parking

Garage

Front & Rear Gardens



Call New Romney - 01797 363745 ■ wardsofkennt.co.uk

- Legal advice should be taken to verify fixtures/fittings, planning, alterations and/or lease details
- Appliances & services are untested, dimensions are approximate and floor plans are not to scale
- Through a Homewise Home For Life Plan people aged 60+ can secure this property for up to 59% less, by purchasing a Lifetime Lease.



13525786/20250313/AH/CA