



Guide Price
£245,000

Freehold

3x  1x  1x 

**Copperfields, Lydd,
Kent, TN29**

OVER 60?

Secure this property
for up to **59% less!**

Wards
Helping you move forwards



Main features

- **Exceptional family home with no onward chain**
- **Secluded rear garden**
- **Stylish modern decoration throughout so no work needed**
- **High-end kitchen and bathroom**
- **Close to shops and amenities**

Accommodation

GROUND FLOOR

Entrance Hall
Kitchen: 9'2 x 8'9 (2.80m x 2.67m)
Lounge: 17'3 x 14'2 (5.26m x 4.32m)

FIRST FLOOR

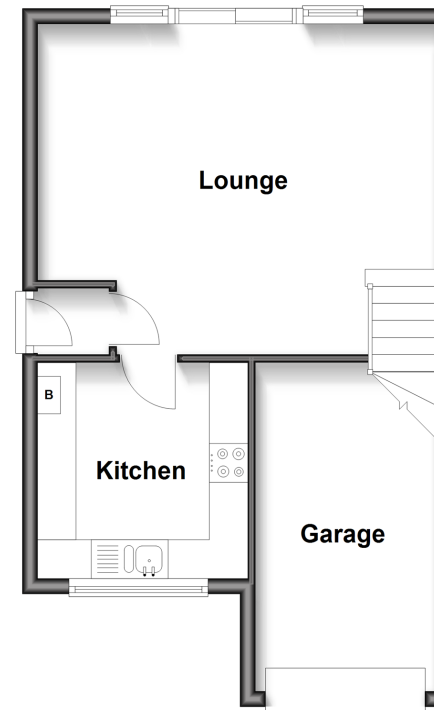
Landing
Bedroom 1: 12'5 x 9'3 (3.79m x 2.82m)
Bedroom 2: 10'9 x 9'9 (3.28m x 2.97m)
Bedroom 3: 7'8 x 6'7 (2.34m x 2.01m)
Bathroom

OUTSIDE

Off Road Parking
Garage
Front & Rear Gardens

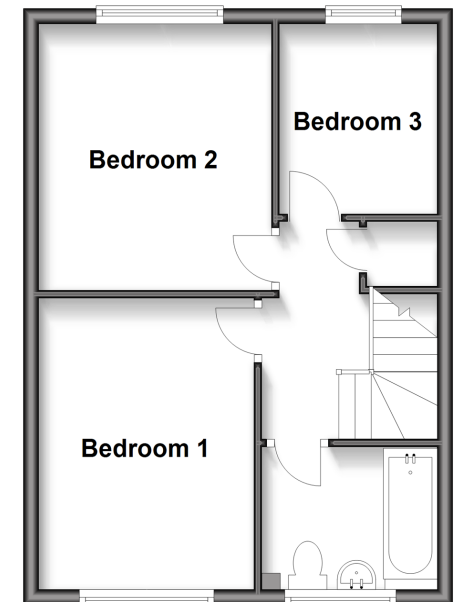
Ground Floor

Approx. 40.4 sq. metres (434.4 sq. feet)



First Floor

Approx. 37.7 sq. metres (405.6 sq. feet)



Call New Romney - 01797 363745 ■ wardsof Kent.co.uk

- Legal advice should be taken to verify fixtures/fittings, planning, alterations and/or lease details
- Appliances & services are untested, dimensions are approximate and floor plans are not to scale
- Through a Homewise Home For Life Plan people aged 60+ can secure this property for up to 59% less, by purchasing a Lifetime Lease.



13525765/20250623/AH/CA