



**Guide Price**  
**£235,000**

**Freehold**

2x  1x  1x 

**The Churchlands, New  
Romney, Kent, TN28**

**OVER 60?**

Secure this property  
for up to **59% less!**

*Wards*  
Helping you move forwards





## Main features

- Central location to schools and shops
- Walking distance to local beach at Littlestone
- Generous garden for children to play in
- Modern stylish decoration
- Many updates and improvements carried out by current owners

## Accommodation

### GROUND FLOOR

Entrance Hall

Kitchen: 9'4 x 5'4 (2.85m x 1.63m)

Dining Area: 11'0 x 8'6 (3.36m x 2.59m)

Conservatory: 14'6 x 6'4 (4.42m x 1.93m)

Lounge: 13'2 x 11'7 (4.02m x 3.53m)

Bathroom

### FIRST FLOOR

Landing

Bedroom 1: 12'2 x 11'5 (3.71m x 3.48m)

Bedroom 2: 11'4 x 11'2 (3.46m x 3.41m)

Loft Room: 11'0 x 5'7 (3.36m x 1.70m)

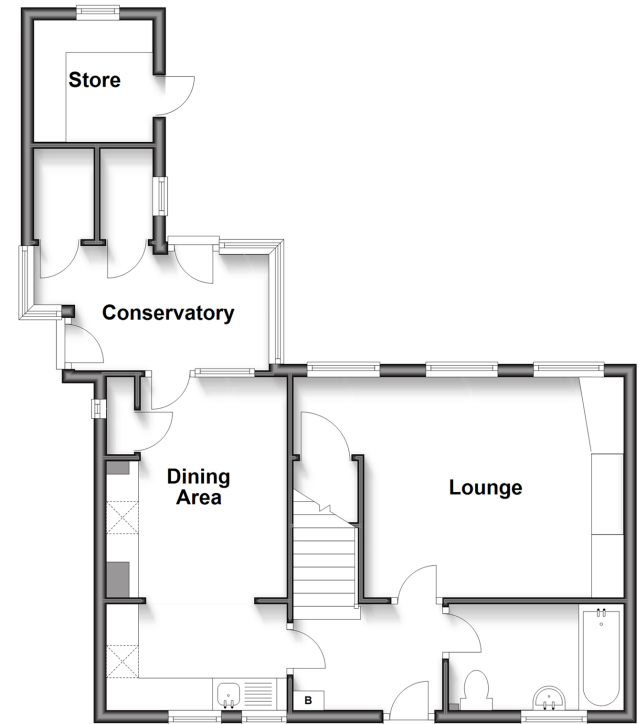
### OUTSIDE

Front & Rear Gardens

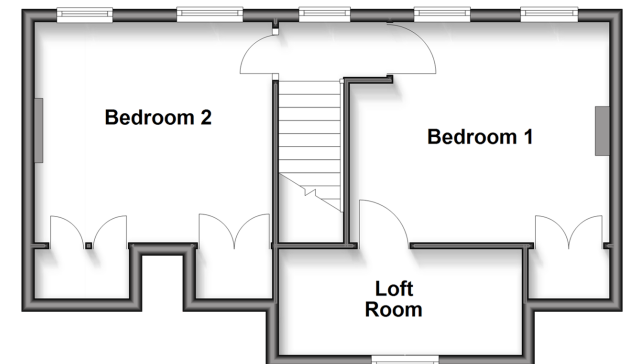
Hard standing

Store

**Ground Floor**  
Approx. 54.6 sq. metres (587.4 sq. feet)



**First Floor**  
Approx. 40.8 sq. metres (439.6 sq. feet)



**Call New Romney - 01797 363745 ■ [wardsof Kent.co.uk](http://wardsof Kent.co.uk)**

- Legal advice should be taken to verify fixtures/fittings, planning, alterations and/or lease details
- Appliances & services are untested, dimensions are approximate and floor plans are not to scale
- Through a Homewise Home For Life Plan people aged 60+ can secure this property for up to 59% less, by purchasing a Lifetime Lease.



13525766/20250208/AH/CA