



**OVER 60?**

Secure this property  
for up to **59% less!**

**Guide Price**  
**£180,000**

**Freehold**

2x  1x  1x 

**Vulcan Cottages,  
Queens Road, Lydd,  
Romney Marsh, Kent,  
TN29**

*Wards*  
Helping you move forwards





## Main features

- **Fabulous cottage with no onward chain**
- **Been in the same family for years which is a testimony to its charm**
- **Spacious living and sleeping accommodation**
- **Ideal for a DIY enthusiast to create the home of your dreams**
- **Close to shops and amenities**

## Accommodation

### GROUND FLOOR

Entrance Hall

Lounge: 20'0 x 14'7 (6.10m x 4.45m)

Kitchen: 10'5 x 7'6 (3.18m x 2.29m)

### FIRST FLOOR

Landing

Bedroom 1: 13'4 x 11'9 (4.07m x 3.58m)

Bedroom 2: 10'8 x 10'3 (3.25m x 3.13m)

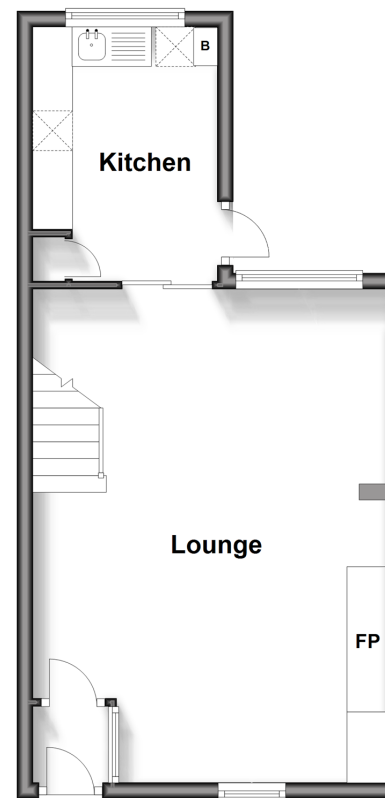
Bathroom

### OUTSIDE

Rear Garden

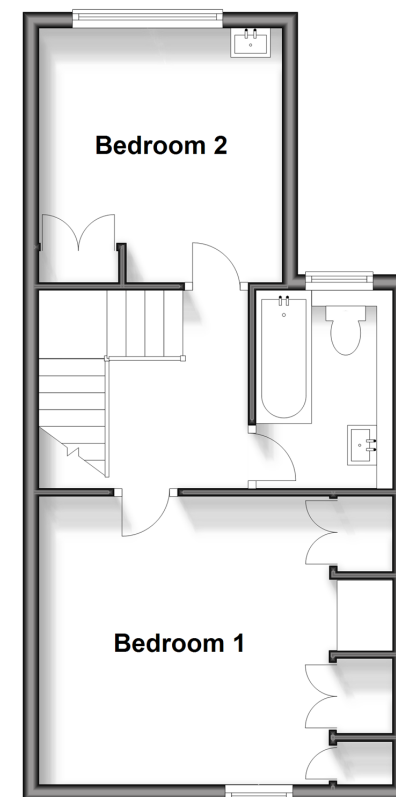
### Ground Floor

Approx. 35.5 sq. metres (382.5 sq. feet)



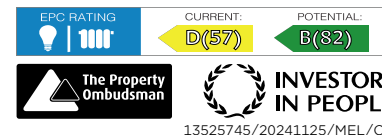
### First Floor

Approx. 38.1 sq. metres (410.6 sq. feet)



**Call New Romney - 01797 363745 ■ [wardsofkennt.co.uk](http://wardsofkennt.co.uk)**

- Legal advice should be taken to verify fixtures/fittings, planning, alterations and/or lease details
- Appliances & services are untested, dimensions are approximate and floor plans are not to scale
- Through a Homewise Home For Life Plan people aged 60+ can secure this property for up to 59% less, by purchasing a Lifetime Lease.



13525745/20241125/MEL/CA