



Guide Price
£290,000

Freehold

2x  1x  1x 

**Williamson Road, Lydd
On Sea, Romney Marsh,
Kent, TN29**

OVER 60?

Secure this property
for up to **59% less!**

Wards
Helping you move forwards



Main features

- Fantastic home with a large, mature rear garden
- Cottagey feel interior
- Stylish modern decoration throughout
- High-end fitted bathroom
- Short drive to local schools

Accommodation

GROUND FLOOR

Entrance Hall

Kitchen: 20'1 x 10'2 (6.13m x 3.10m)

Utility Room: 10'8 x 7'6 (3.25m x 2.29m)

Cloakroom

Lounge: 14'7 x 11'9 (4.45m x 3.58m)

FIRST FLOOR

Landing

Bedroom 1: 12'9 x 11'8 (3.89m x 3.56m)

Bedroom 2: 11'7 x 10'2 (3.53m x 3.10m)

Bathroom

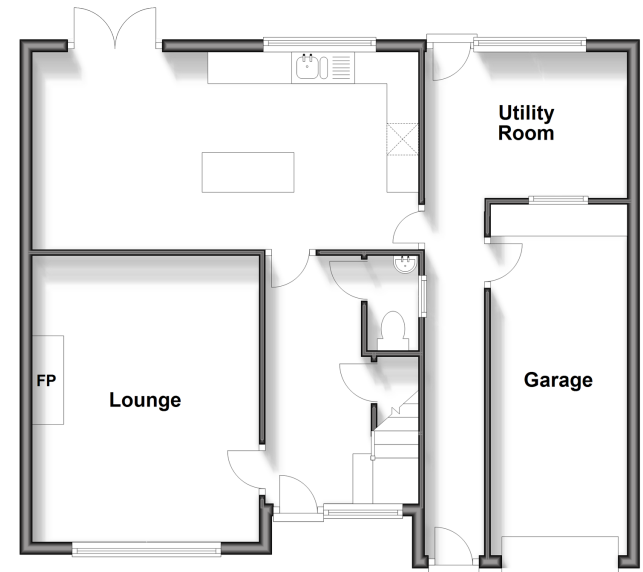
OUTSIDE

Off Road Parking

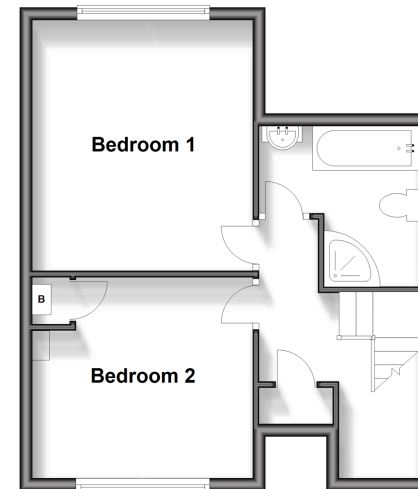
Garage

Front & Rear Gardens

Ground Floor
Approx. 72.2 sq. metres (777.3 sq. feet)



First Floor
Approx. 38.8 sq. metres (417.9 sq. feet)



Call New Romney - 01797 363745 ■ wardsokent.co.uk

- Legal advice should be taken to verify fixtures/fittings, planning, alterations and/or lease details
- Appliances & services are untested, dimensions are approximate and floor plans are not to scale
- Through a Homewise Home For Life Plan people aged 60+ can secure this property for up to 59% less, by purchasing a Lifetime Lease.



13525708/20241009/SRH/CA