



**Guide Price**  
**£260,000**

**Freehold**

2x  1x  1x 

**Hope Villas, Cockreed  
Lane, New Romney,  
Kent, TN28**

**OVER 60?**

Secure this property  
for up to **59% less!**

*Wards*  
Helping you move forwards





## Main features

- Beautiful home that is ready to move into and with lots of character
- An amazing bathroom in which to relax after a long day at work
- Large garden to the rear
- Large useful workshop
- Conservatory in which to relax or entertain

## Accommodation

### GROUND FLOOR

Entrance Hall

Lounge/Diner: 23'5 (7.14m) x 15'0 (4.58m) narrowing to 11'5 (3.48m)

Kitchen: 13'11 x 8'3 (4.24m x 2.52m)

Conservatory: 11'3 x 8'3 (3.43m x 2.52m)

### FIRST FLOOR

Landing

Bedroom 1: 14'10 x 12'0 (4.52m x 3.66m)

Bedroom 2: 11'0 x 9'3 (3.36m x 2.82m)

Bathroom: 11'4 x 8'6 (3.46m x 2.59m)

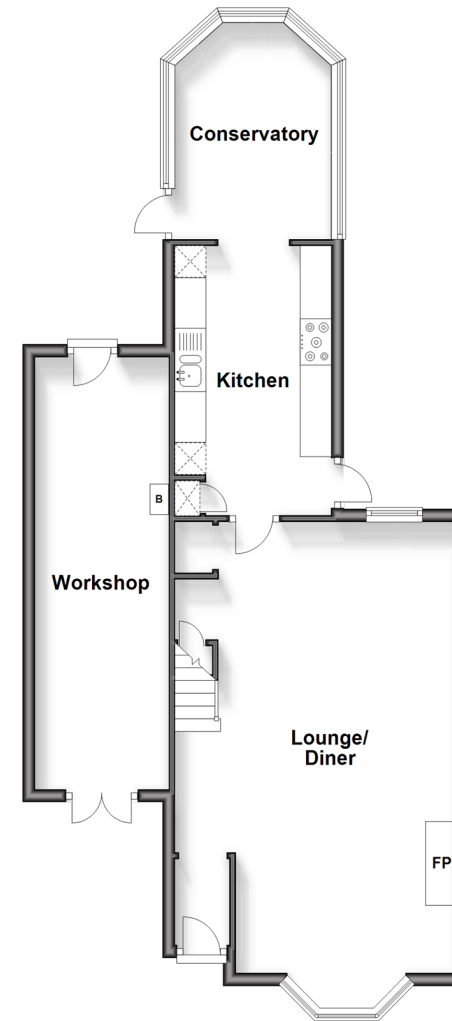
### OUTSIDE

Front & Rear Gardens

Workshop

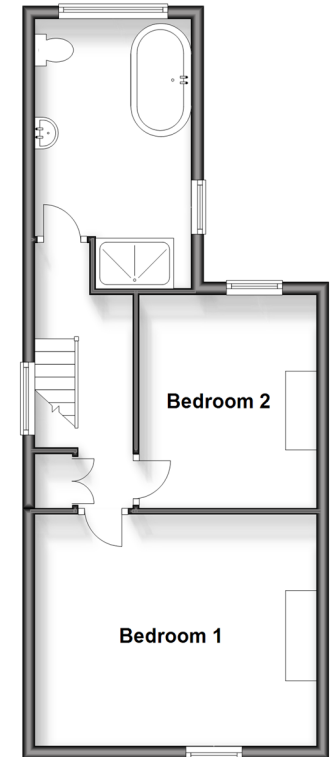
### Ground Floor

Approx. 66.7 sq. metres (718.1 sq. feet)



### First Floor

Approx. 43.2 sq. metres (465.2 sq. feet)



Call New Romney - 01797 363745 ■ [wardsokent.co.uk](http://wardsokent.co.uk)

- Legal advice should be taken to verify fixtures/fittings, planning, alterations and/or lease details
- Appliances & services are untested, dimensions are approximate and floor plans are not to scale
- Through a Homewise Home For Life Plan people aged 60+ can secure this property for up to 59% less, by purchasing a Lifetime Lease.



13525672/20241106/SRH/SRH