



**Price**  
**£155,000**

**Leasehold**

2x 🛏️ 1x 🚻 1x 🚗

**Bank House, Mountfield  
Road, New Romney,  
Kent, TN28**

**OVER 60?**

Secure this property  
for up to **59% less!**

**MOUNTFIELD ROAD**  
LEADING TO  
LEAROYD ROAD

*Wards*  
Helping you move forwards



## Main features

- **Third floor purpose built apartment with far reaching views**
- **Modern stylish decoration**
- **Ideal weekend or investment home**
- **Short walk to both primary and secondary schools**
- **Many places of interest to visit close by including the miniature railway**

## Accommodation

### THIRD FLOOR

Entrance Hall

Lounge: 11'1 x 8'6 (3.38m x 2.59m)

Kitchen: 11'3 x 6'3 (3.43m x 1.91m)

Bedroom 1: 11'2 x 10'1 (3.41m x 3.08m)

Bedroom 2(Used as Dining Room): 8'1 x 6'5 up to alcove (2.47m x 1.96m)

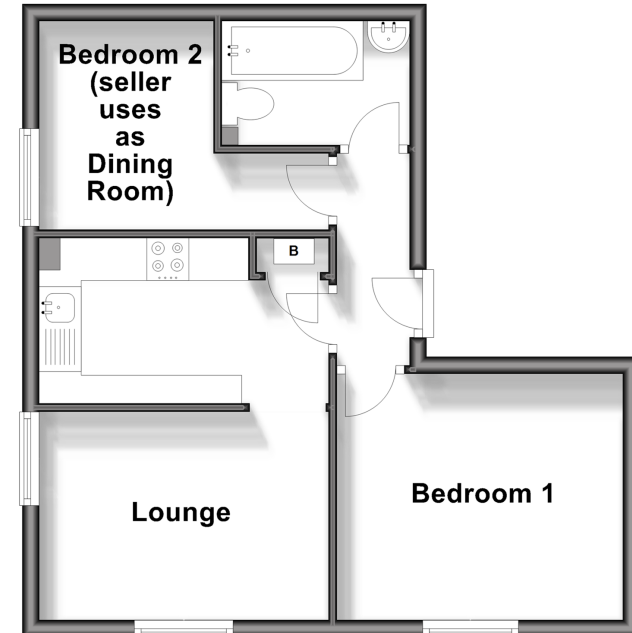
Bathroom

### OUTSIDE

Communal Car Park

### Third Floor

Approx. 38.5 sq. metres (414.0 sq. feet)



**Call New Romney - 01797 363745 ■ wardsofkent.co.uk**

■ Legal advice should be taken to verify fixtures/fittings, planning, alterations and/or lease details  
 ■ Through a Homewise Home For Life Plan people aged 60+ can secure this property for up to 59% less, by purchasing a Lifetime Lease.

■ Appliances & services are untested, dimensions are approximate and floor plans are not to scale



13525489/20240501/MC/CA