



Guide Price
£325,000

Freehold

3x  1x  1x 

**Laurel Avenue, St.
Mary's Bay, Romney
Marsh, Kent, TN29**

OVER 60?

Secure this property
for up to **59% less!**

Wards
Helping you move forwards



Main features

- Detached bungalow with secluded well stocked rear garden
- Large conservatory to relax in
- Ideal DIY project
- No onward chain
- Walking distance to local shops and the beach

Accommodation

GROUND FLOOR

Entrance Hall

Lounge: 16'8 x 12'7 (5.08m x 3.84m)

Kitchen: 9'6 x 8'9 (2.90m x 2.67m)

Dining Room: 8'7 x 8'5 (2.62m x 2.57m)

Bedroom 2: 9'3 x 7'0 (2.82m x 2.14m)

Wet Room

Bedroom 1: 11'9 x 8'9 (3.58m x 2.67m)

En-Suite Cloakroom

Bedroom 3 (Sitting Room): 13'9 x 9'0 (4.19m x 2.75m)

Conservatory: 12'0 x 11'8 (3.66m x 3.56m)

OUTSIDE

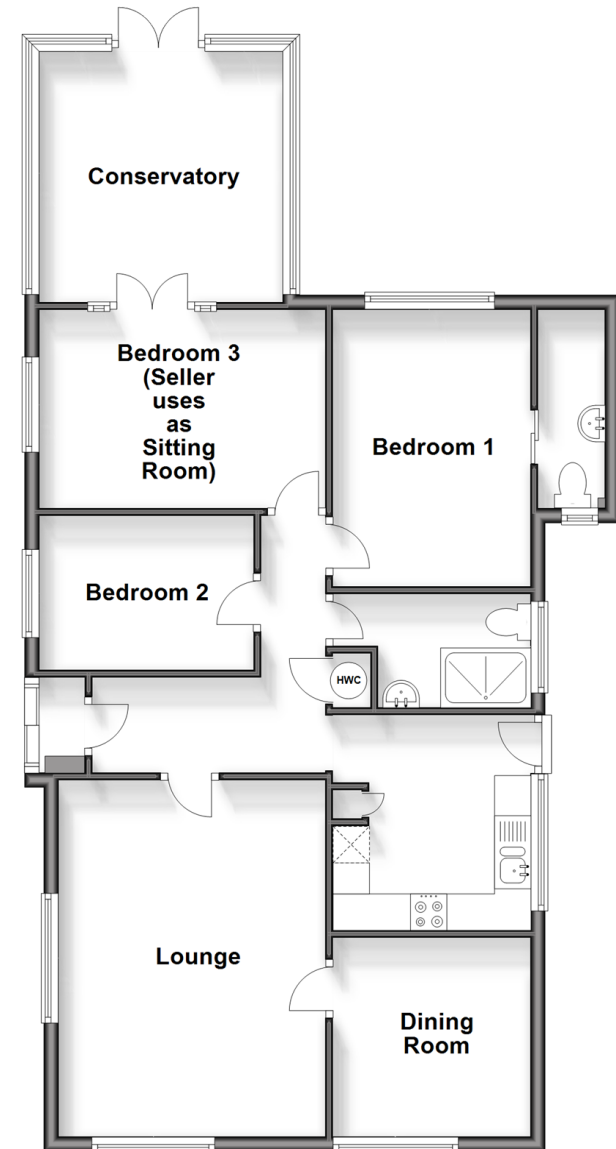
Off Road Parking

Garage

Front & Rear Gardens

Ground Floor

Approx. 89.7 sq. metres (965.8 sq. feet)



Call New Romney - 01797 363745 ■ wardsokent.co.uk

- Legal advice should be taken to verify fixtures/fittings, planning, alterations and/or lease details
- Appliances & services are untested, dimensions are approximate and floor plans are not to scale
- Through a Homewise Home For Life Plan people aged 60+ can secure this property for up to 59% less, by purchasing a Lifetime Lease.



13525603/20240911/CA/CA