



Guide Price
£400,000

Freehold

4x  1x  2x 

**Mabledon Close, New
Romney, Kent, TN28**

OVER 60?

Secure this property
for up to **59% less!**

Wards
Helping you move forwards



Main features

- Offers in excess of £450,000
- No onward chain
- Ideal DIY project to put your own stamp on your next home
- Double garage and a large driveway
- Excellent secluded rear garden for keen gardeners to enjoy all year round
- Central town location

Accommodation

GROUND FLOOR

Entrance Hall

Cloakroom

Lounge: 15'6 x 13'8 (4.73m x 4.17m)

Kitchen: 14'0 x 10'9 (4.27m x 3.28m)

Dining Area: 14'0 x 11'0 (4.27m x 3.36m)

FIRST FLOOR

Landing

Bedroom 1: 13'1 x 12'0 (3.99m x 3.66m)

Bedroom 2: 10'9 x 10'2 (3.28m x 3.10m)

Bedroom 3: 11'10 x 8'2 (3.61m x 2.49m)

Bedroom 4: 9'0 x 7'10 (2.75m x 2.39m)

Bathroom

OUTBUILDING

Double Garage

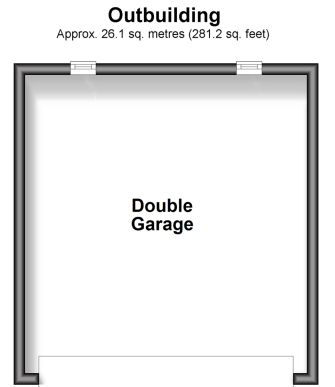
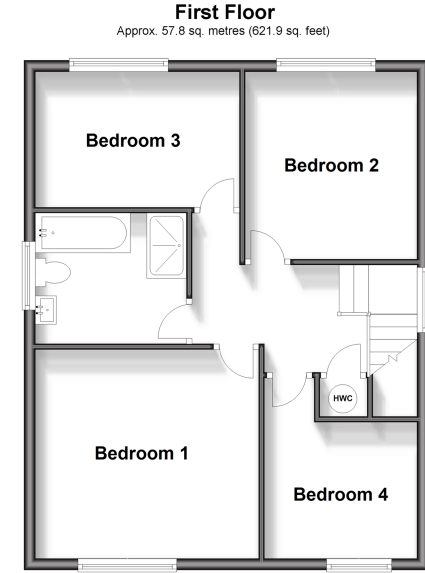
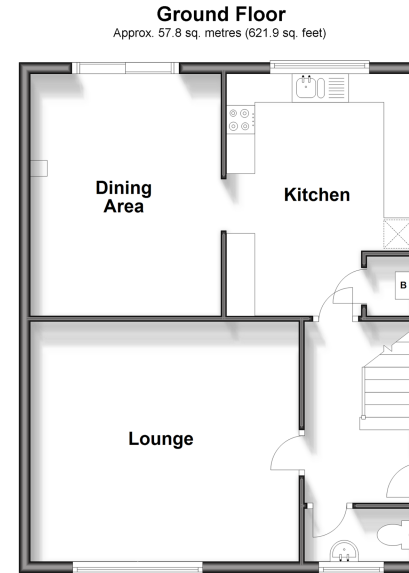
OUTSIDE

Off Road Parking

Front & Rear Gardens

Call New Romney - 01797 363745 ■ wardsforkent.co.uk

- Legal advice should be taken to verify fixtures/fittings, planning, alterations and/or lease details
- Appliances & services are untested, dimensions are approximate and floor plans are not to scale
- Through a Homewise Home For Life Plan people aged 60+ can secure this property for up to 59% less, by purchasing a Lifetime Lease.



13525353/20240601/TT/CA