



**Price**  
**£575,000**

**Freehold**

4x  2x  2x 

**Seaway Gardens, St.  
Mary's Bay, Kent, TN29**

**OVER 60?**

Secure this property  
for up to **59% less!**

*Wards*  
Helping you move forwards



## Main features

- Truly exceptional spacious home
- Quiet yet convenient mews
- Walking distance to local beach and amenities
- Sunny aspect garden for enjoyment all year round
- Plenty of parking for all the family and visitors

## Accommodation

### GROUND FLOOR

- Entrance Hall
- Kitchen: 17'2 x 13'6 (5.24m x 4.12m)
- Dining Area: 13'3 x 11'3 (4.04m x 3.43m)
- Lounge: 20'2 x 17'8 (6.15m x 5.39m)
- Study: 11'9 x 11'3 (3.58m x 3.43m)
- Cloakroom

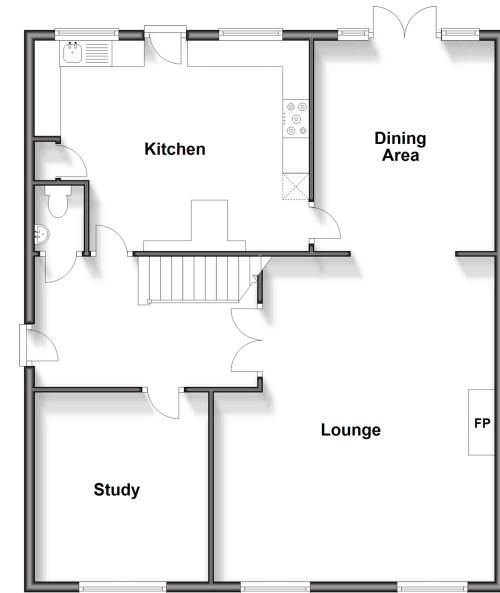
### FIRST FLOOR

- Landing
- Bedroom 1: 15'2 x 13'4 (4.63m x 4.07m)
- En-Suite Shower Room
- Bedroom 2: 15'8 x 10'4 (4.78m x 3.15m)
- Bedroom 3: 14'5 x 10'5 (4.40m x 3.18m)
- Bedroom 4: 11'9 x 11'3 (3.58m x 3.43m)
- Bathroom

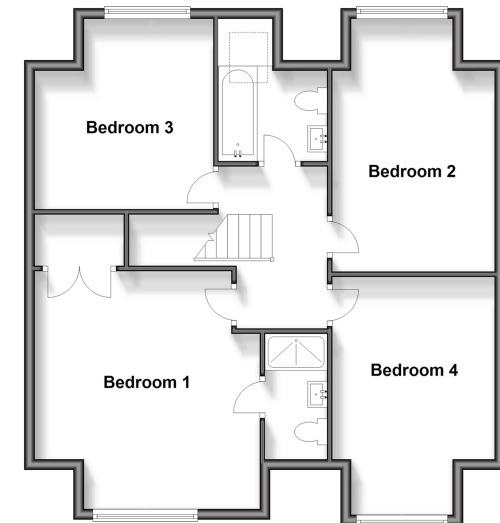
### OUTSIDE

- Off Road Parking
- Garage
- Front & Rear Gardens

**Ground Floor**  
Approx. 90.8 sq. metres (977.3 sq. feet)



**First Floor**  
Approx. 76.0 sq. metres (817.6 sq. feet)



Call New Romney - 01797 363745 ■ [wardsforkent.co.uk](http://wardsforkent.co.uk)

- Legal advice should be taken to verify fixtures/fittings, planning, alterations and/or lease details
- Appliances & services are untested, dimensions are approximate and floor plans are not to scale
- Through a Homewise Home For Life Plan people aged 60+ can secure this property for up to 59% less, by purchasing a Lifetime Lease.



13525401/20240205/AH/CA