



Guide Price
£350,000

Freehold

3x  1x  1x 

**Church Lane, New
Romney, Kent, TN28**

OVER 60?

Secure this property
for up to **59% less!**



Video Tour available

Wards

Helping you move forwards



Main features

- Much extended home with exceptional countryside views
- Quiet residential area on the edge of town
- Large lounge and dining area
- Manageable front & rear gardens
- No onward chain, priced to sell

Accommodation

GROUND FLOOR

Porch

Entrance Hall

Lounge: 21'1 x 13'2 (6.43m x 4.02m)

Dining Area: 10'9 x 10'1 (3.28m x 3.08m)

Bedroom 1: 12'8 x 11'9 (3.86m x 3.58m)

Bedroom 2: 13'3 x 11'4 into bay (4.04m x 3.46m)

Bedroom 3: 11'8 x 10'3 (3.56m x 3.13m)

Kitchen: 14'2 x 9'7 (4.32m x 2.92m)

Conservatory: 13'5 x 10'7 (4.09m x 3.23m)

Shower Room

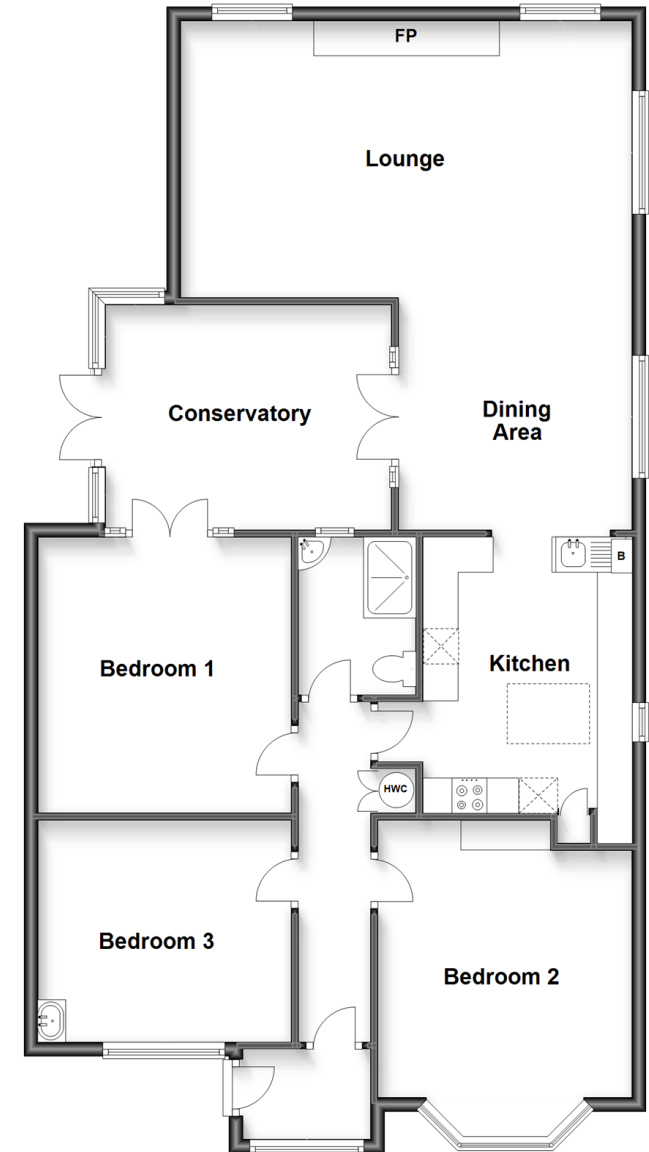
OUTSIDE

Off Road Parking

Front & Rear Gardens

Ground Floor

Approx. 117.6 sq. metres (1265.6 sq. feet)



Call New Romney - 01797 363745 ■ wardsforkent.co.uk

- Legal advice should be taken to verify fixtures/fittings, planning, alterations and/or lease details
- Appliances & services are untested, dimensions are approximate and floor plans are not to scale
- Through a Homewise Home For Life Plan people aged 60+ can secure this property for up to 59% less, by purchasing a Lifetime Lease.



13525179/20240812/SRH/CA