



Price
£300,000

Freehold

3x  1x  1x 

**Megan Close, Lydd,
Kent, TN29**

OVER 60?

Secure this property
for up to **59% less!**



Video Tour available

Wards

Helping you move forwards



Main features

- Fabulous detached modern home in quiet mews
- Low maintenance garden to the rear
- Modern stylish decoration
- Close to town centre with shops, tea room etc
- Short drive to local beach at Dungeness

Accommodation

GROUND FLOOR

Entrance Hall

Lounge : 17'9 (5.41m) narrowing to 10'6 (3.20m) x 16'2 at narrowest point (4.93m)

Kitchen : 10'6 x 9'3 (3.20m x 2.82m)

Downstairs Cloakroom

FIRST FLOOR

Landing

Bedroom 1: 11'5 x 8'3 (3.48m x 2.52m)

Bedroom 2: 10'9 x 9'8 (3.28m x 2.95m)

Bedroom 3: 9'0 x 8'0 (2.75m x 2.44m)

Bathroom

OUTSIDE

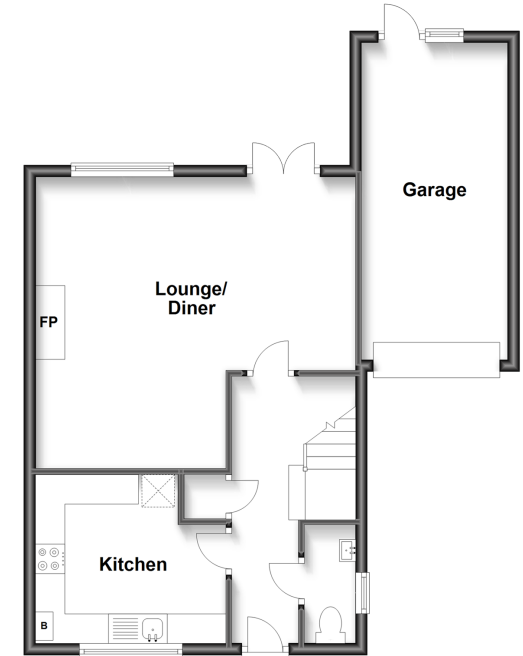
Off Road Parking

Garage

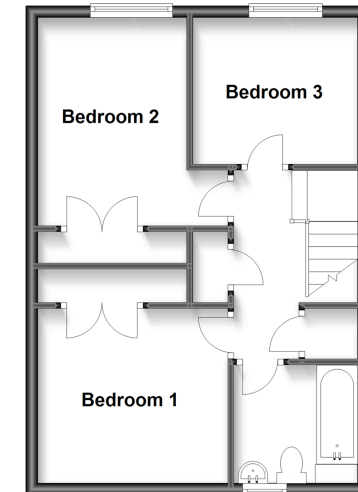
Front Garden

Rear Garden

Ground Floor
Approx. 56.8 sq. metres (611.3 sq. feet)



First Floor
Approx. 43.1 sq. metres (463.7 sq. feet)



Call New Romney - 01797 363745 ■ wardsforkent.co.uk

- Legal advice should be taken to verify fixtures/fittings, planning, alterations and/or lease details
- Appliances & services are untested, dimensions are approximate and floor plans are not to scale
- Through a Homewise Home For Life Plan people aged 60+ can secure this property for up to 59% less, by purchasing a Lifetime Lease.



13524816/20240201/SRH/CA