



Price
£325,000

Freehold

3x  1x  1x 

**Caxton Close, Hartley,
Longfield, Kent, DA3**

OVER 60?

Secure this property
for up to **59% less!**

Wards
Helping you move forwards



Main features

- Communal parking to the front
- Situated on a peaceful road ensuring privacy and serenity
- Low maintenance garden with rear access
- Spacious kitchen/diner offering ample space for entertaining
- Close to local amenities, schools and country clubs

Accommodation

GROUND FLOOR

Porch
 Utility Area: 6'5 x 3'4 (1.96m x 1.02m)
 Hallway
 Cloakroom: 4'5 x 2'7 (1.35m x 0.79m)
 Lounge: 15'8 x 15'2 (4.78m x 4.63m)
 Kitchen/Diner: 18'3 x 9'4 (5.57m x 2.85m)

FIRST FLOOR

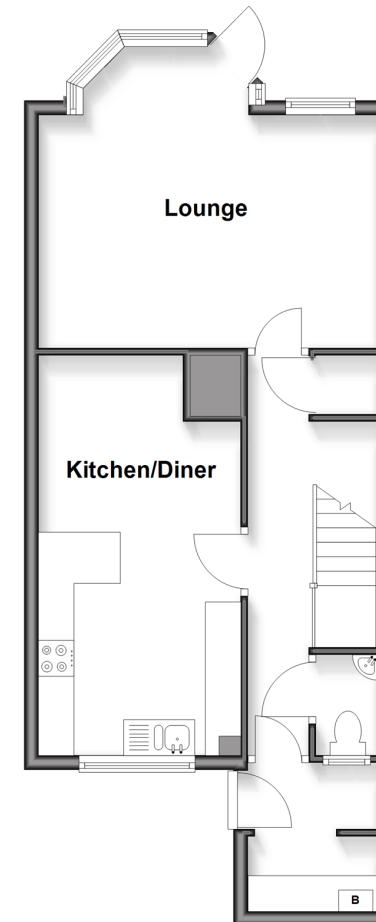
Landing
 Bedroom 1: 11'5 x 8'5 (3.48m x 2.57m)
 Walk in Wardrobe: 7'1 x 4'7 (2.16m x 1.40m)
 Bedroom 2: 12'9 x 8'8 (3.89m x 2.64m)
 Bedroom 3: 9'8 x 6'7 (2.95m x 2.01m)
 Bathroom: 8'2 x 6'9 (2.49m x 2.06m)

OUTSIDE

Front Garden
 Rear Garden
 Communal Parking

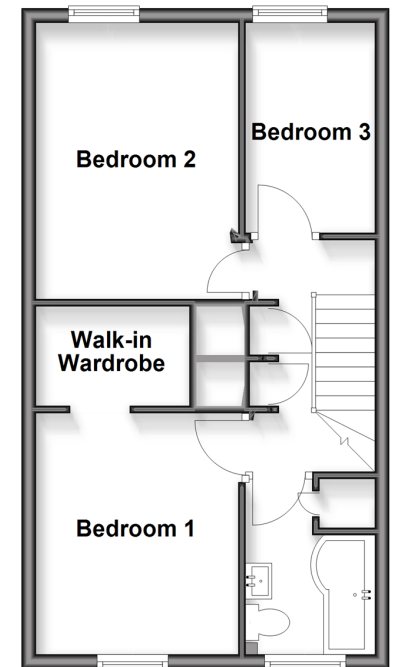
Ground Floor

Approx. 48.4 sq. metres (521.5 sq. feet)



First Floor

Approx. 41.8 sq. metres (449.8 sq. feet)



Call New Ash Green - 01474 872466 ■ wardsofkent.co.uk

- Legal advice should be taken to verify fixtures/fittings, planning, alterations and/or lease details
- Appliances & services are untested, dimensions are approximate and floor plans are not to scale
- Through a Homewise Home For Life Plan people aged 60+ can secure this property for up to 50% less, by purchasing a Lifetime Lease.



13416585/20251118/SB/KD