



Guide Price
£560,000

Freehold

4x  2x  1x 

**Olivers Mill, New Ash
Green, Kent, DA3**

OVER 60?

Secure this property
for up to **59% less!**

Wards
Helping you move forwards



Main features

- Completely refurbished to a high standard by current homeowners
- Beautiful ensuite shower room to main bedroom
- Off road parking and garage
- Rear extension providing ample space to entertain friends and family
- Low maintenance rear garden, perfectly set up for the summer

Accommodation

GROUND FLOOR

Hallway

Cloakroom: 5'6 x 2'7 (1.68m x 0.79m)

Lounge: 15'3 x 11'5 (4.65m x 3.48m)

Kitchen: 10'2 x 7'9 (3.10m x 2.36m)

Dining Area: 22'4 x 16'11 (6.81m x 5.16m)

FIRST FLOOR

Landing

Bedroom 1: 14'4 x 9'4 (4.37m x 2.85m)

Ensuite Shower Room: 8'11 x 2'10 (2.72m x 0.86m)

Bedroom 2: 12'4 x 11'3 (3.76m x 3.43m)

Bedroom 3: 11'3 x 8'11 (3.43m x 2.72m)

Bedroom 4: 9'1 x 7'11 (2.77m x 2.41m)

Bathroom: 8'0 x 5'0 (2.44m x 1.53m)

OUTSIDE

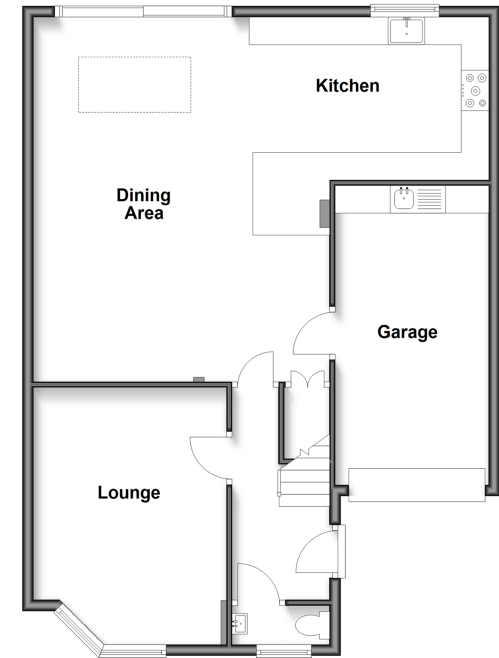
Garage: 17'9 x 9'4 (5.41m x 2.85m)

Driveway

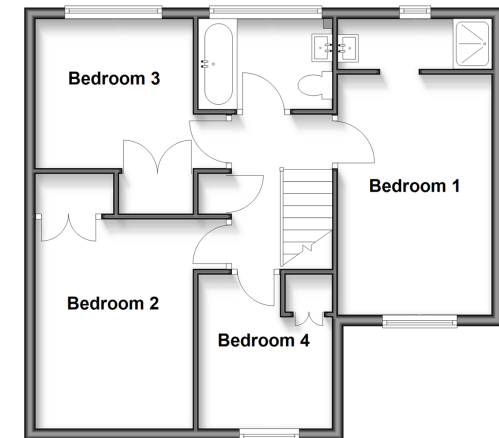
Front Garden

Rear Garden

Ground Floor
Approx. 84.7 sq. metres (911.7 sq. feet)



First Floor
Approx. 55.3 sq. metres (595.3 sq. feet)



Call New Ash Green - 01474 872466 ■ wardsofkent.co.uk

- Legal advice should be taken to verify fixtures/fittings, planning, alterations and/or lease details
- Appliances & services are untested, dimensions are approximate and floor plans are not to scale
- Through a Homewise Home For Life Plan people aged 60+ can secure this property for up to 50% less, by purchasing a Lifetime Lease.



13417566/20250819/JM/KD