



Price
£350,000

Freehold

3x  1x  1x 

**Manor Forstal, New Ash
Green, Longfield, Kent,
DA3**

OVER 60?

Secure this property
for up to **59% less!**

Wards
Helping you move forwards



Main features

- On the market with no forward chain
- Garage en bloc nearby with power and light
- Ideal home for first time buyers
- Fantastic location within short distance of village and amenities
- Large and bright conservatory leading out onto rear garden

Accommodation

GROUND FLOOR

Hallway

Cloakroom: 6'5 x 2'11 (1.96m x 0.89m)

Lounge: (L-shaped) 18'1 x 9'5 (5.52m x 2.87m) plus 11'0 x 5'0 (3.36m x 1.53m)

Study: 7'11 x 5'10 (2.41m x 1.78m)

Conservatory: 13'8 x 10'9 (4.17m x 3.28m)

Kitchen: 9'4 x 7'8 (2.85m x 2.34m)

FIRST FLOOR

Landing

Bedroom 1: 12'7 x 9'7 (3.84m x 2.92m)

Bedroom 2: 11'0 x 9'8 (3.36m x 2.95m)

Bedroom 3: 7'10 x 7'9 (2.39m x 2.36m)

Bathroom: 8'9 x 6'5 (2.67m x 1.96m)

OUTSIDE

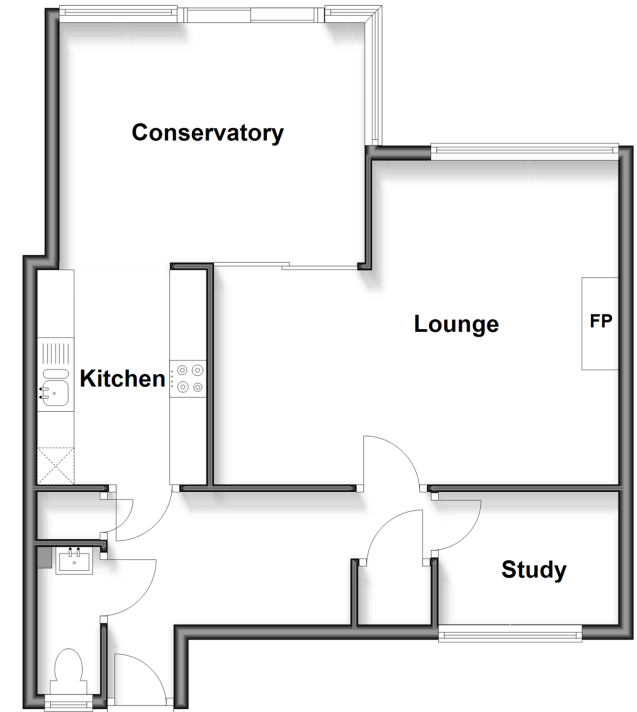
Front Garden

Rear Garden

Garage En Bloc

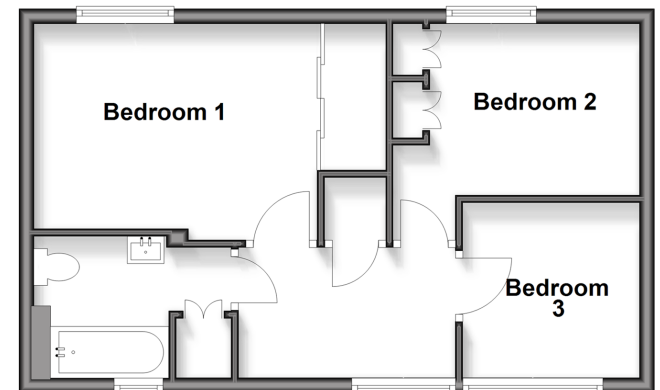
Ground Floor

Approx. 58.8 sq. metres (632.9 sq. feet)



First Floor

Approx. 39.6 sq. metres (426.5 sq. feet)



Call New Ash Green - 01474 872466 ■ wardsof Kent.co.uk

- Legal advice should be taken to verify fixtures/fittings, planning, alterations and/or lease details
- Appliances & services are untested, dimensions are approximate and floor plans are not to scale
- Through a Homewise Home For Life Plan people aged 60+ can secure this property for up to 59% less, by purchasing a Lifetime Lease.



13326106/20250405/SB/KD