



Price
£325,000

Freehold

3x  2x  2x 

**Caxton Close, Hartley,
Longfield, Kent, DA3**

Wards
Helping you move forwards



Main features

- A spacious and functional kitchen/diner offering ample space for entertaining
- Situated on a peaceful road ensuring privacy and serenity
- Close to local amenities and shops
- Communal parking at front and rear
- Good schools and country clubs

Accommodation

GROUND FLOOR

Porch
Hallway
Cloakroom
Lounge: 15'8 x 10'9 (4.78m x 3.28m)
Kitchen/Diner: 18'0 x 9'5 (5.49m x 2.87m)

FIRST FLOOR

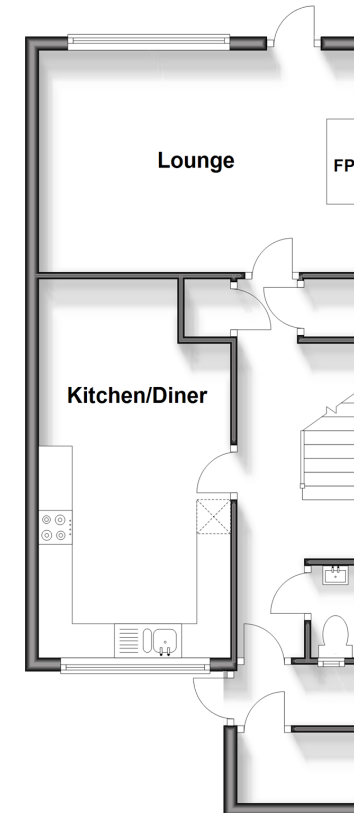
Landing
Bedroom 1: 12'0 x 9'0 (3.66m x 2.75m)
Bedroom 2: 11'0 x 8'0 (3.36m x 2.44m)
Bedroom 3: 9'0 x 6'7 (2.75m x 2.01m)
Bathroom: 8'3 x 6'9 (2.52m x 2.06m)

OUTSIDE

Front Garden
Rear Garden

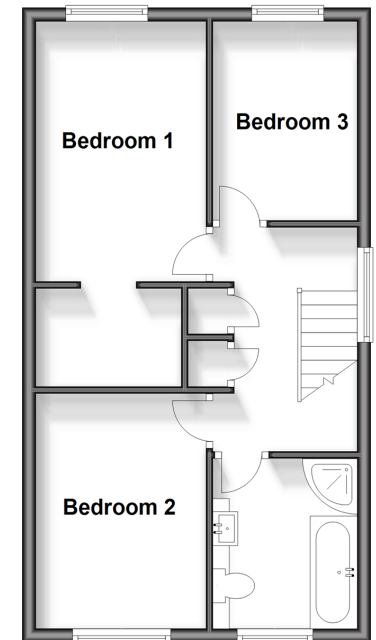
Ground Floor

Approx. 46.6 sq. metres (501.8 sq. feet)



First Floor

Approx. 43.3 sq. metres (466.5 sq. feet)



Call New Ash Green - 01474 872466 ■ wardsokent.co.uk

- Legal advice should be taken to verify fixtures/fittings, planning, alterations and/or lease details
- Appliances & services are untested, dimensions are approximate and floor plans are not to scale



13418854/20241204/SB/JH