



OVER 60?

Secure this property
for up to **59% less!**

Price

£220,000

Leasehold

1x  1x  1x 

**Manor Gardens, North
Ash Road, New Ash
Green, Longfield, Kent,
DA3**

Wards
Helping you move forwards



Main features

- Ground floor apartment with parking space
- Short stroll to local village shops and amenities
- Ground floor living with easy access
- Private communal gardens
- Added security of private entrance

Accommodation

GROUND FLOOR

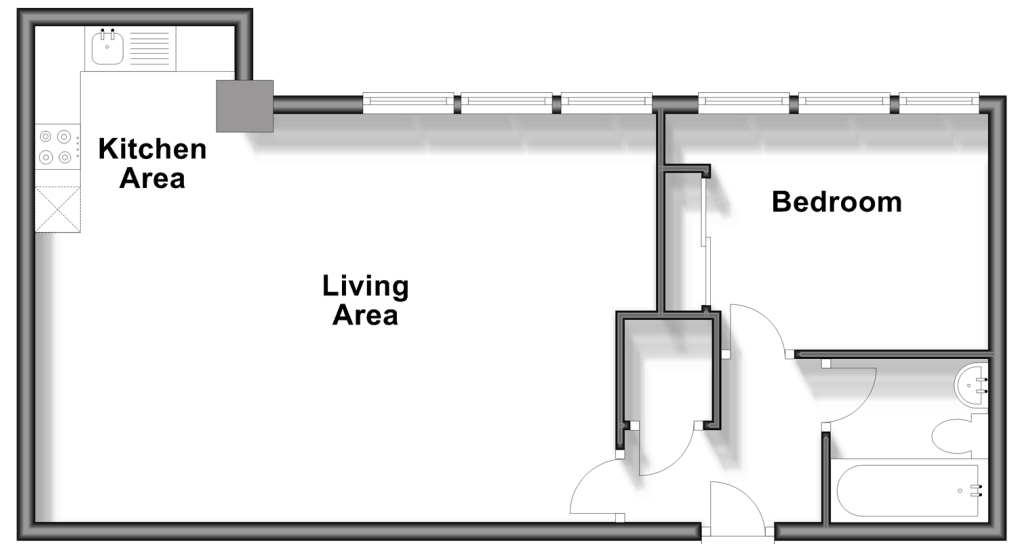
- Entrance Hall
- Living Area: 20'9 x 14'0 (6.33m x 4.27m)
- Kitchen Area: 8'7 x 6'7 (2.62m x 2.01m)
- Bedroom: 12'0 x 8'7 (3.66m x 2.62m)
- Bathroom

OUTSIDE

- Parking Space
- Communal Gardens

Ground Floor

Approx. 49.2 sq. metres (529.2 sq. feet)



Call New Ash Green - 01474 872466 ■ wardsof Kent.co.uk

- Legal advice should be taken to verify fixtures/fittings, planning, alterations and/or lease details
- Through a Homewise Home For Life Plan people aged 60+ can secure this property for up to 59% less, by purchasing a Lifetime Lease.

- Appliances & services are untested, dimensions are approximate and floor plans are not to scale



13419093/20240930/LM/JH