



Price
£195,000

Leasehold

1x  1x  1x 

**Bazes Shaw, New Ash
Green, Longfield, Kent,
DA3**

OVER 60?

Secure this property
for up to **59% less!**

Wards
Helping you move forwards



Main features

- Short walk to village amenities with shops and restaurants
- Spacious maisonette with ample storage
- Situated in a peaceful location
- Ideal for first time buyers or investors
- No chain



Accommodation

GROUND FLOOR

Entrance hall

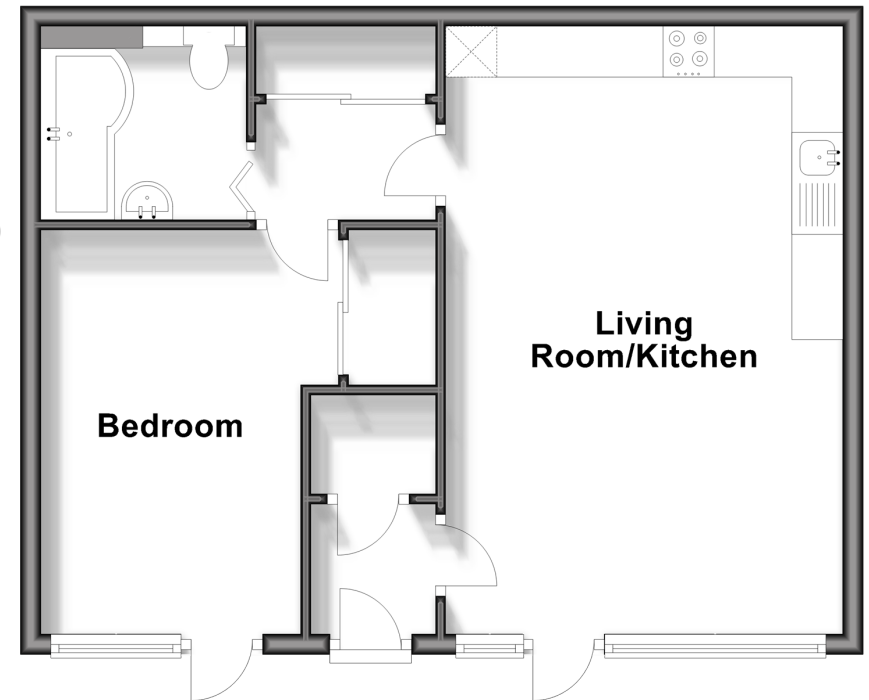
Living Room/Kitchen: 20'0 x 12'8
(6.10m x 3.86m)

Bedroom: 13'0 x 8'10 (3.97m x 2.69m)

Bathroom



Ground Floor
Approx. 46.9 sq. metres (504.8 sq. feet)



Call New Ash Green - 01474 872466 ■ wardsof Kent.co.uk

- Legal advice should be taken to verify fixtures/fittings, planning, alterations and/or lease details
- Appliances & services are untested, dimensions are approximate and floor plans are not to scale
- Through a Homewise Home For Life Plan people aged 60+ can secure this property for up to 59% less, by purchasing a Lifetime Lease.



13418445/20241105/RC4/JH