



Price

£400,000

Freehold

3x  1x  1x 

Olivers Mill, New Ash  
Green, Longfield, Kent,  
DA3

**OVER 60?**

Secure this property  
for up to **59% less!**

*Wards*  
Helping you move forwards



## Main features

- Large open-plan living room
- Separate office space
- Large driveway accommodating 2 cars
- Nearby shops and restaurants
- Close proximity to Longfield station and motorways

## Accommodation

### GROUND FLOOR

Entrance Hall

Living/Dining Area: 24'0 x 9'0 (7.32m x 2.75m)

Kitchen: 11'7 x 8'0 (3.53m x 2.44m)

Cloakroom

Office: 8'8 x 8'2 (2.64m x 2.49m)

### FIRST FLOOR

Landing

Bedroom 1: 11'3 x 8'11 (3.43m x 2.72m)

Bedroom 2: 12'0 x 11'3 (3.66m x 3.43m)

Bedroom 3: 8'0 x 8'0 (2.44m x 2.44m)

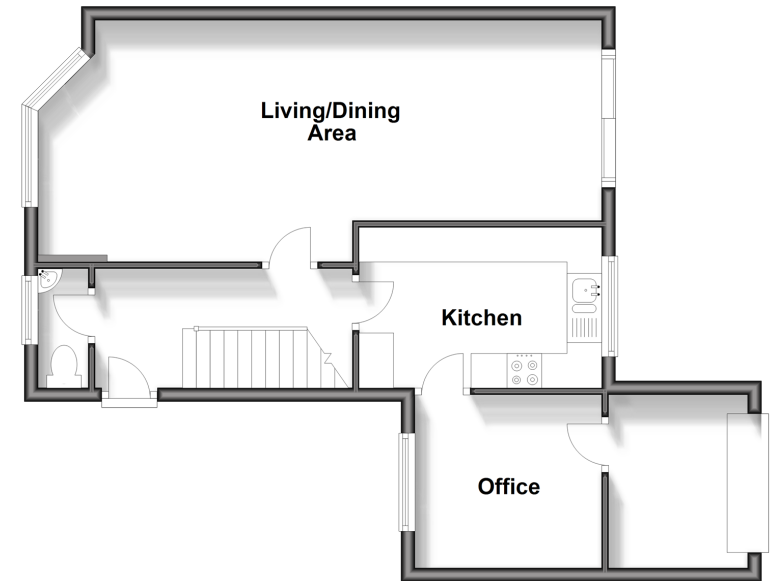
Bathroom

### OUTSIDE

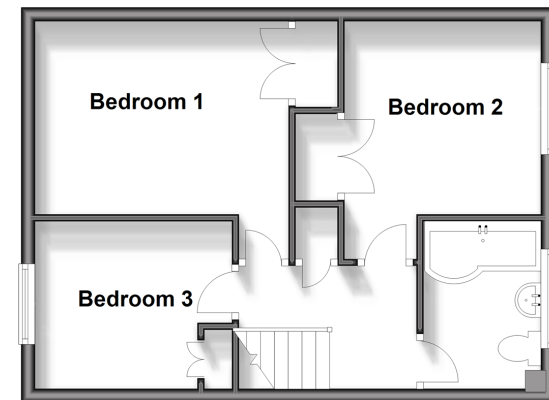
Double Driveway

Rear Garden

**Ground Floor**  
Approx. 55.4 sq. metres (596.2 sq. feet)



**First Floor**  
Approx. 38.9 sq. metres (419.2 sq. feet)



**Call New Ash Green - 01474 872466 ■ [wardsof Kent.co.uk](http://wardsof Kent.co.uk)**

- Legal advice should be taken to verify fixtures/fittings, planning, alterations and/or lease details
- Appliances & services are untested, dimensions are approximate and floor plans are not to scale
- Through a Homewise Home For Life Plan people aged 60+ can secure this property for up to 59% less, by purchasing a Lifetime Lease.



13419076/20240830/YE/JH