



Price
£650,000

Freehold

4x  2x  2x 

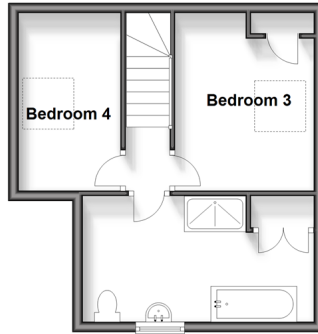
**Gresham Avenue,
Hartley, Longfield, Kent,
DA3**

OVER 60?

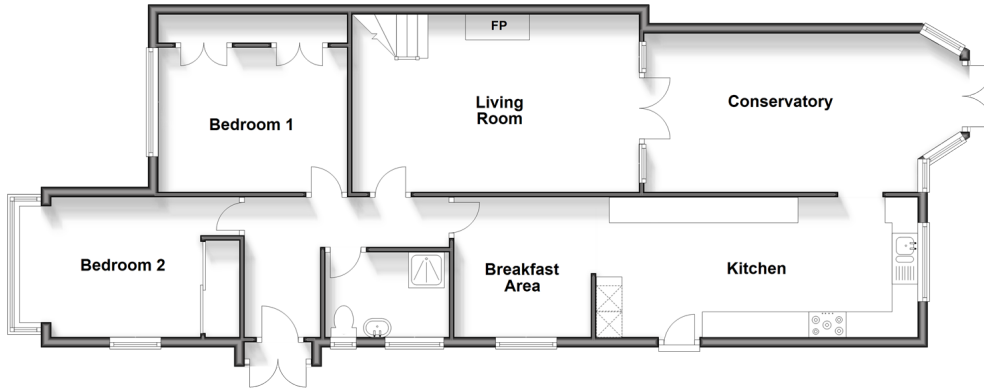
Secure this property
for up to **59% less!**

Wards
Helping you move forwards

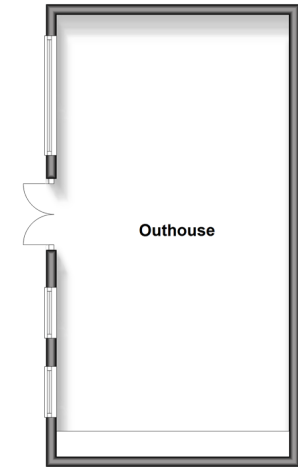
First Floor
Approx. 32.9 sq. metres (354.0 sq. feet)



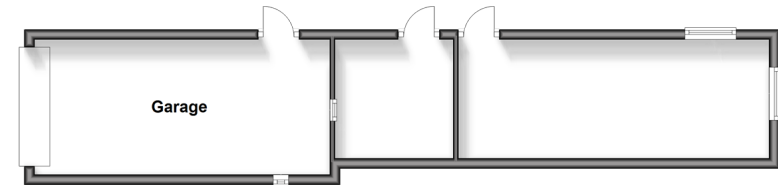
Ground Floor
Approx. 100.2 sq. metres (1078.9 sq. feet)



Outbuilding
Approx. 39.5 sq. metres (425.6 sq. feet)



Outbuilding
Approx. 35.1 sq. metres (378.1 sq. feet)



Accommodation

GROUND FLOOR

Entrance Porch
Hallway
Kitchen: 20'0 x 9'0 (6.10m x 2.75m)
Breakfast Area: 9'0 x 8'0 (2.75m x 2.44m)
Conservatory: 18'0 x 10'0 (5.49m x 3.05m)
Living Room: 19'0 x 11'5 (5.80m x 3.48m)
Bedroom 1: 12'0 x 9'0 (3.66m x 2.75m)
Wet Room
Bedroom 2: 12'9 x 10'5 (3.89m x 3.18m)

FIRST FLOOR

Landing
Bathroom
Bedroom 3: 11'0 x 6'0 (3.36m x 1.83m)
Bedroom 4: 11'5 x 7'0 (3.48m x 2.14m)

OUTSIDE

Front Garden
Double Garage & Driveway
Large Rear Garden
Outhouse: 35'0 x 19'0 (10.68m x 5.80m)



Main features

- Luxurious chalet bungalow situated in a peaceful location
- Double garage/outbuilding with extra storage
- Sports bar with pool table, bar and hot tub
- Close to schools & public train and motorway links
- No forward chain



Nearest Schools

Primary Schools: Our Lady of Hartley Catholic Primary, Hartley, Longfield 0.3 miles, Hartley Primary 0.8 miles, Langafel C of E Voluntary Controlled Primary 1.7 miles

Secondary Schools: Longfield Academy 1.3 miles



Transport Information

Train Stations: Longfield 0.9 miles, Swanscombe 4.1 miles, Meopham 4.3 miles



Address

Gresham Avenue, Hartley, Longfield, Kent, DA3



Directions

For directions to this property please contact us.



Wards
Helping you move forwards

Call New Ash Green Branch 01474 872466 ■ wardsofkent.co.uk



- Legal advice should be taken to verify fixtures/fittings, planning, alterations and/or lease details
- Appliances & services are untested, dimensions are approximate and floor plans are not to scale
- Through a Homewise Home For Life Plan people aged 60+ can secure this property for up to 59% less, by purchasing a Lifetime Lease.



13419073/20240830/YE/JH