



Price
£600,000

Freehold

4x  1x  2x 

**Redhill Wood, New Ash
Green, Longfield, Kent,
DA3**

OVER 60?

Secure this property
for up to **59% less!**

Wards
Helping you move forwards



Main features

- Detached house in a much sought after neighbourhood
- Large double garage/potential office room
- Open lounge with separate dining area
- Short walk to the local village shops
- Will be sold chain free.

Accommodation

GROUND FLOOR

- Entrance Hall
- Cloakroom
- Breakfast Area: 6'5 x 5'11 (1.96m x 1.80m)
- Kitchen: 10'7 x 9'0 (3.23m x 2.75m)
- Bedroom 4: (L-shaped) 10'1 x 9'9 (3.08m x 2.97m) plus 6'0 x 2'6 (1.83m x 0.76m)
- Dining Room : 12'8 x 9'5 (3.86m x 2.87m)
- Lounge: (L-shaped) 17'8 x 13'0 (5.39m x 3.97m) plus 2'9 x 10'2 (0.84m x 3.10m)

FIRST FLOOR

- Landing
- Bedroom 1: (L-shaped) 14'8 x 9'5 (4.47m x 2.87m) plus 5'9 x 4'3 (1.75m x 1.30m)
- En-Suite
- Bedroom 2: (L-shaped) 13'6 x 8'4 (4.12m x 2.54m) plus 2'9 x 2'3 (0.84m x 0.69m)
- Bathroom
- Bedroom 3: 9'8 x 8'0 (2.95m x 2.44m)

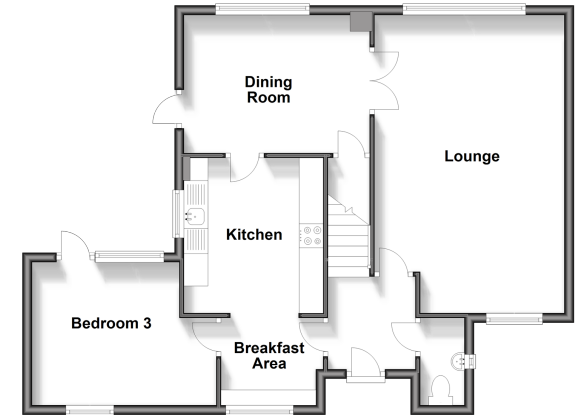
OUTSIDE

- Driveway
- Double Garage
- Front Garden
- Rear Garden

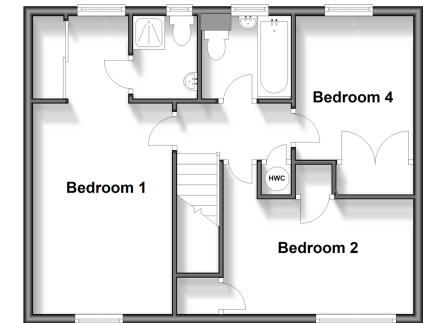
Call New Ash Green - 01474 872466 ■ wardsof Kent.co.uk

- Legal advice should be taken to verify fixtures/fittings, planning, alterations and/or lease details
- Appliances & services are untested, dimensions are approximate and floor plans are not to scale
- Through a Homewise Home For Life Plan people aged 60+ can secure this property for up to 59% less, by purchasing a Lifetime Lease.

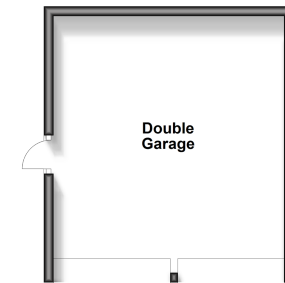
Ground Floor
Approx. 67.9 sq. metres (730.5 sq. feet)



First Floor
Approx. 49.7 sq. metres (534.5 sq. feet)



Garage
Approx. 24.9 sq. metres (267.7 sq. feet)



13419062/20240607/DH/JH