



Price
£725,000

Freehold

4x  2x  3x 

**Broomfields, Hartley,
Longfield, Kent, DA3**

OVER 60?

Secure this property
for up to **59% less!**

Wards
Helping you move forwards



Main features

- Large driveway with a garage
- Versatile living space with extended open plan kitchen
- Utility room for extra storage space
- Landscaped rear garden with private seating area
- Close to Longfield Station

Accommodation

GROUND FLOOR

Hallway
Cloakroom
Lounge: 15'4 x 14'4 (4.68m x 4.37m)
Dining Room: 10'8 x 9'1 (3.25m x 2.77m)
Study: 10'4 x 8'3 (3.15m x 2.52m)
Kitchen: 16'3 x 11'3 (4.96m x 3.43m)
Utility Room: 8'2 x 4'4 (2.49m x 1.32m)

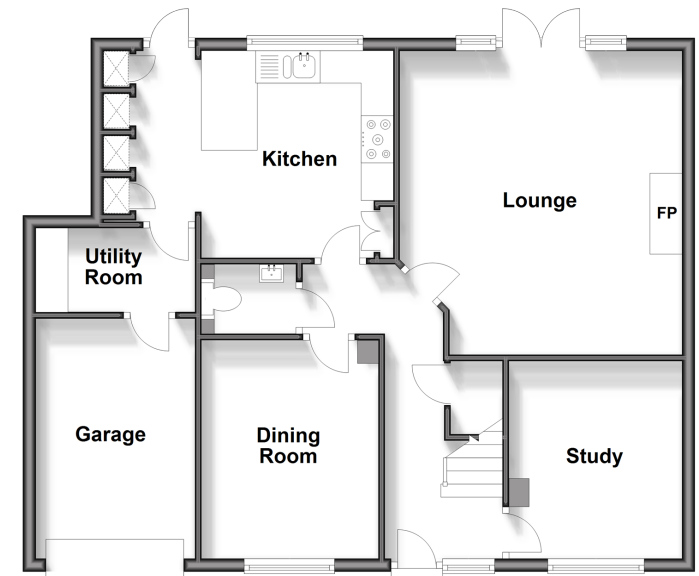
FIRST FLOOR

Landing
Bedroom 1: 13'4 x 10'4 (4.07m x 3.15m)
Ensuite Shower Room
Bedroom 2: 10'4 x 10'4 (3.15m x 3.15m)
Bedroom 3: 10'1 x 8'5 (3.08m x 2.57m)
Bedroom 4: 10'3 x 7'5 (3.13m x 2.26m)
Bathroom

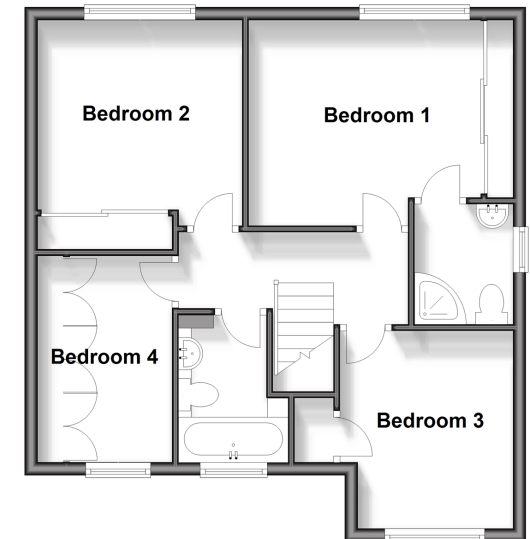
OUTSIDE

Garage
Driveway
Front Garden
Rear Garden

Ground Floor
Approx. 75.8 sq. metres (815.7 sq. feet)



First Floor
Approx. 52.8 sq. metres (568.7 sq. feet)



Call New Ash Green - 01474 872466 ■ wardsof Kent.co.uk

- Legal advice should be taken to verify fixtures/fittings, planning, alterations and/or lease details
- Appliances & services are untested, dimensions are approximate and floor plans are not to scale
- Through a Homewise Home For Life Plan people aged 60+ can secure this property for up to 59% less, by purchasing a Lifetime Lease.



13417339/20250321/SB/JH