



**Guide Price**  
**£725,000**

**Freehold**

4x  2x  3x 

**Broomfields, Hartley,  
Longfield, Kent, DA3**

**OVER 60?**

Secure this property  
for up to **59% less!**

*Wards*  
Helping you move forwards



## Main features

- Large driveway with a garage
- Versatile living space with extended open plan kitchen
- Utility room for extra storage space
- Landscaped rear garden with private seating area
- Close to Longfield Station

## Accommodation

### GROUND FLOOR

- Cloakroom
- Lounge: 15'0 x 14'0 (4.58m x 4.27m)
- Dining Room: 11'0 x 9'0 (3.36m x 2.75m)
- Study: 10'0 x 8'0 (3.05m x 2.44m)
- Kitchen: 14'0 x 10'0 (4.27m x 3.05m)
- Utility Room

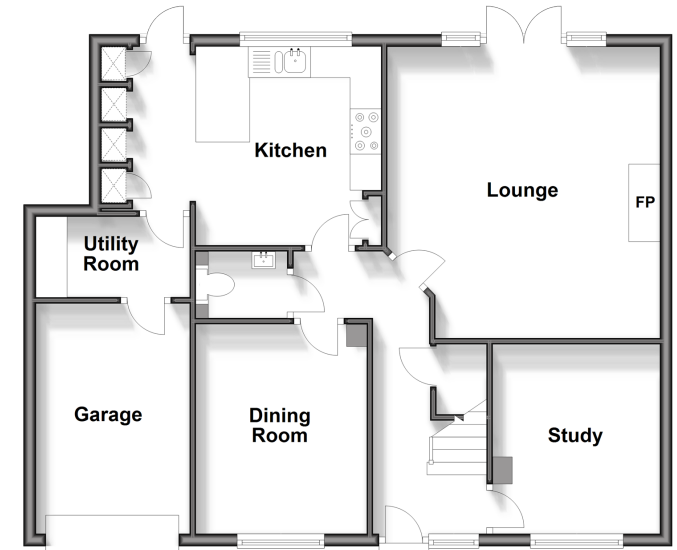
### FIRST FLOOR

- Landing
- Bedroom 1: 11'0 x 10'0 (3.36m x 3.05m)
- Ensuite Shower Room
- Bedroom 2: 10'0 x 10'0 (3.05m x 3.05m)
- Bedroom 3: 9'0 x 8'0 (2.75m x 2.44m)
- Bedroom 4: 10'0 x 6'0 (3.05m x 1.83m)
- Bathroom

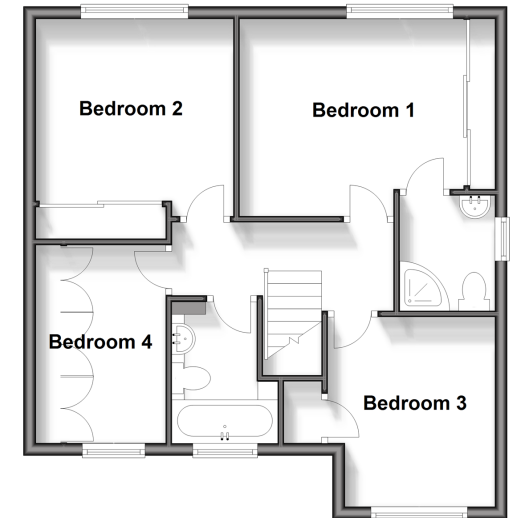
### OUTSIDE

- Garage
- Front Garden
- Rear Garden

**Ground Floor**  
Approx. 75.8 sq. metres (815.7 sq. feet)



**First Floor**  
Approx. 52.8 sq. metres (568.7 sq. feet)



Call New Ash Green - 01474 872466 ■ [wardsof Kent.co.uk](http://wardsof Kent.co.uk)

- Legal advice should be taken to verify fixtures/fittings, planning, alterations and/or lease details
- Appliances & services are untested, dimensions are approximate and floor plans are not to scale
- Through a Homewise Home For Life Plan people aged 60+ can secure this property for up to 59% less, by purchasing a Lifetime Lease.



13417339/20240501/MP/JH