



Price
£485,000

Freehold

4x  2x  2x 

**Olivers Mill, New Ash
Green, Longfield, Kent,
DA3**

OVER 60?

Secure this property
for up to **59% less!**

Wards
Helping you move forwards



Main features

- Superbly refurbished to an impressive condition
- Rear extension providing useful utility room and extension to kitchen
- Driveway and good size garage
- Ensuite shower room to main bedroom
- Low maintenance garden ideal for entertaining guests

Accommodation

GROUND FLOOR

Hallway

Cloakroom

Lounge: (L-shaped) 12'7 x 11'6 (3.84m x 3.51m) plus 9'0 x 2'5 (2.75m x 0.74m)

Dining Area: 10'7 x 9'6 (3.23m x 2.90m)

Kitchen: 11'10 x 7'9 (3.61m x 2.36m)

Breakfast Area: 8'4 x 7'3 (2.54m x 2.21m)

Utility Room : 9'1 x 7'3 (2.77m x 2.21m)

FIRST FLOOR

Landing

Bedroom 1: 13'9 x 9'6 (4.19m x 2.90m)

Ensuite Shower Room: 8'3 x 2'7 (2.52m x 0.79m)

Bedroom 2: (L-shaped) 12'2 x 9'6 (3.71m x 2.90m) plus 2'9 x 1'9 (0.84m x 0.53m)

Bedroom 3: (L-shaped) 9'4 x 8'11 (2.85m x 2.72m) plus 3'1 x 2'1 (0.94m x 0.64m)

Bedroom 4: 9'1 x 7'10 (2.77m x 2.39m)

Bathroom: 7'11 x 5'1 (2.41m x 1.55m)

OUTSIDE

Driveway

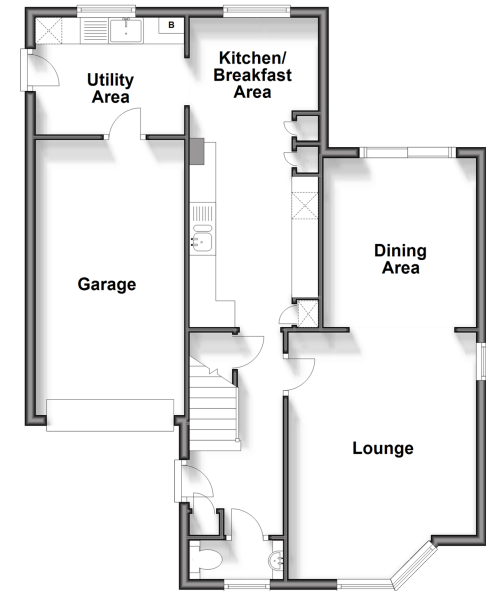
Garage

Rear Garden

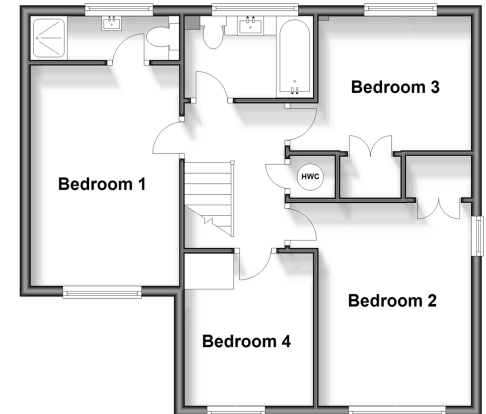
Call New Ash Green - 01474 872466 ■ wardsof Kent.co.uk

- The seller is a person connected with Wards as defined in the Estate Agents Act 1979
- Legal advice should be taken to verify fixtures/fittings, planning, alterations and/or lease details
- Appliances & services are untested, dimensions are approximate and floor plans are not to scale
- Through a Homewise Home For Life Plan people aged 60+ can secure this property for up to 59% less, by purchasing a Lifetime Lease.

Ground Floor
Approx. 70.7 sq. metres (760.8 sq. feet)



First Floor
Approx. 54.9 sq. metres (590.6 sq. feet)



13419042/20240413/DF/DF