



Price
£375,000

Freehold

3x  1x  1x 

**Caling Croft, New Ash
Green, Kent, DA3**

OVER 60?

Secure this property
for up to **59% less!**

Wards
Helping you move forwards



Main features

- Walking distance to local amenities
- Big open living space and natural light with versatile arrangements
- Sunny rear garden and outbuilding with electrics
- Access to garage directly from garden with additional parking
- Semi-rural location but with good access to main roads

Accommodation

GROUND FLOOR

Hallway

Cloakroom

Lounge/Diner: 18'3 x 15'11 (5.57m x 4.85m)

Kitchen: 9'0 x 7'0 (2.75m x 2.14m)

FIRST FLOOR

Landing

Bedroom 1: 13'0 x 9'0 (3.97m x 2.75m)

Bedroom 2: 12'0 x 9'0 (3.66m x 2.75m)

Bedroom 3: 7'11 x 6'0 (2.41m x 1.83m)

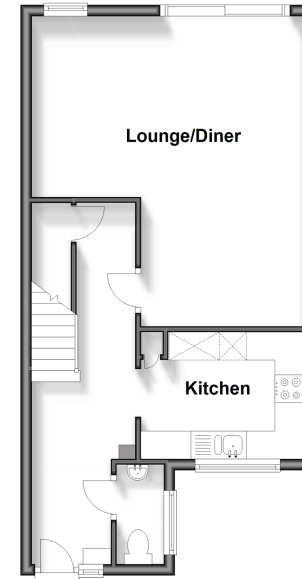
OUTSIDE

Front Garden

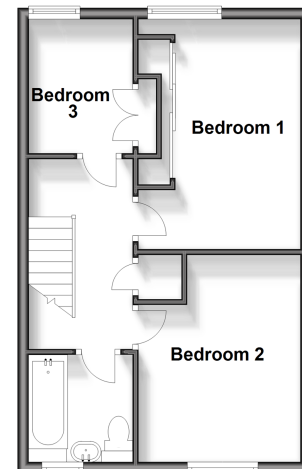
Rear Garden

Garage

Ground Floor
Approx. 43.1 sq. metres (463.5 sq. feet)



First Floor
Approx. 38.6 sq. metres (415.4 sq. feet)



Call New Ash Green - 01474 872466 ■ wardsof Kent.co.uk

- Legal advice should be taken to verify fixtures/fittings, planning, alterations and/or lease details
- Appliances & services are untested, dimensions are approximate and floor plans are not to scale
- Through a Homewise Home For Life Plan people aged 60+ can secure this property for up to 59% less, by purchasing a Lifetime Lease.



13414139/20240313/YE/JH