



**Modern
Auction**

**£350,000
Freehold**

4x  2x  1x 

**Olivers Mill, New Ash
Green, Longfield, Kent,
DA3**

Wards
Helping you move forwards



Main features

- Spacious lounge/diner overlooking rear garden
- Walking distance to local amenities and desirable schools
- For sale by Modern Auction - T&C's apply
- Buyer's fees apply
- Subject to an undisclosed Reserve Price

Accommodation

GROUND FLOOR

Entrance Hall

Lounge/Diner: 20'7 x 19'2 (6.28m x 5.85m)

Kitchen: 10'7 x 9'4 (3.23m x 2.85m)

Shower Room

FIRST FLOOR

Landing

Bedroom 1: 14'9 x 8'7 up to fitted wardrobes (4.50m x 2.62m)

Bedroom 2: 11'8 x 9'10 (3.56m x 3.00m)

Bedroom 3: 10'6 x 7'10 (3.20m x 2.39m)

Bedroom 4: 9'9 x 7'10 (2.97m x 2.39m)

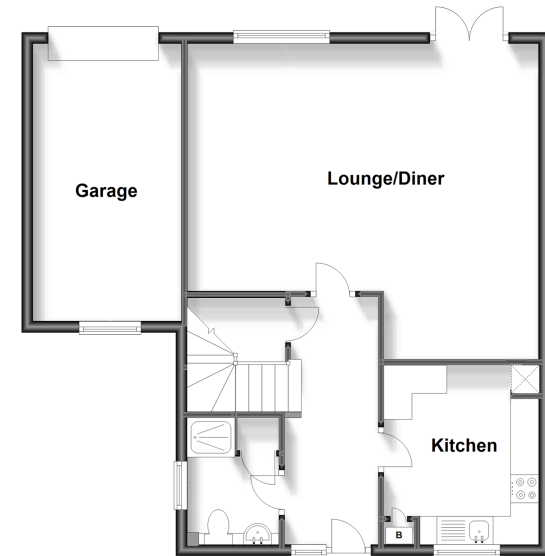
Bathroom

OUTSIDE

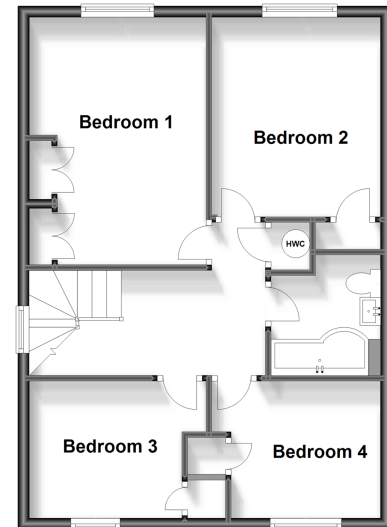
Rear Garden

Garage to Side

Ground Floor
Approx. 69.1 sq. metres (743.7 sq. feet)



First Floor
Approx. 55.6 sq. metres (598.1 sq. feet)



Call New Ash Green - 01474 872466 ■ wardsokent.co.uk

- Legal advice should be taken to verify fixtures/fittings, planning, alterations and/or lease details
- Appliances & services are untested, dimensions are approximate and floor plans are not to scale



13418992/20250304/SB/DF