



**OVER 60?**  
Secure this property  
for up to **59% less!**

**Price**  
**£625,000**

**Freehold**

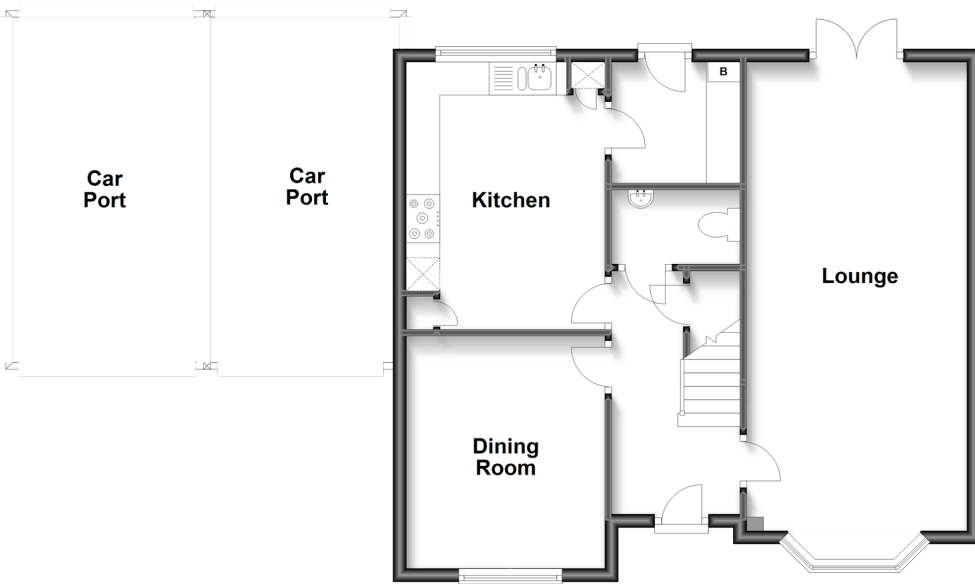
5x  2x  2x 

**The Chase, Main Road,  
Longfield, Kent, DA3**

*Wards*  
Helping you move forwards

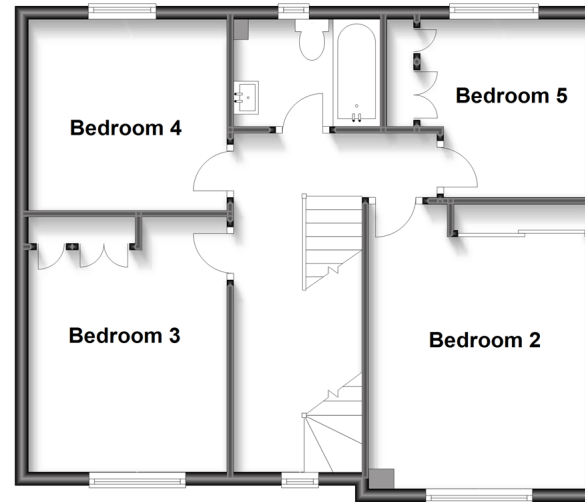
### Ground Floor

Approx. 60.6 sq. metres (652.5 sq. feet)



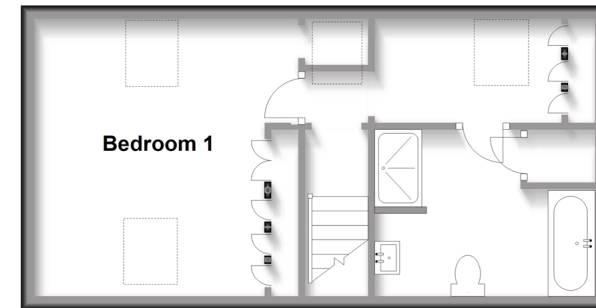
### First Floor

Approx. 57.9 sq. metres (623.7 sq. feet)



### Second Floor

Approx. 35.1 sq. metres (377.3 sq. feet)



## Accommodation

### GROUND FLOOR

Hallway

Dining Room: 12'3 x 9'8 (3.74m x 2.95m)

Cloakroom: 6'0 x 2'10 (1.83m x 0.86m)

Kitchen: 13'1 x 9'7 (3.99m x 2.92m)

Utility Room: 6'3 x 6'0 (1.91m x 1.83m)

Lounge: 22'5 x 10'7 (6.84m x 3.23m)

### FIRST FLOOR

Landing

Bedroom 2: 13'4 x 10'9 (4.07m x 3.28m)

Bedroom 5: 8'10 x 7'5 (2.69m x 2.26m)

Bathroom: 7'1 x 5'6 (2.16m x 1.68m)

Bedroom 4: 9'9 x 8'10 (2.97m x 2.69m)

Bedroom 3: 12'2 x 9'10 (3.71m x 3.00m)

### SECOND FLOOR

Landing

Bedroom 1: 14'1 x 13'1 (4.30m x 3.99m)

Ensuite Bathroom: (L-shaped) 8'3 x 6'9 (2.52m x 2.06m) plus 5'6 x 3'11 (1.68m x 1.19m)

### OUTSIDE

Rear Garden

Outbuilding: 27'2 x 10'10 (8.29m x 3.30m)

Front Garden

Off Road Parking

2 Car Ports



## Main features

- Incredible outbuilding providing excellent entertaining space
- Fantastic parking with double carport and driveway
- Top floor providing stunning main bedroom and ensuite bathroom
- Short walk to Longfield Station
- Stunning condition throughout with impeccable quality finishes



### Nearest Schools

Primary Schools: Langafel C of E Voluntary Controlled Primary 0.4 miles, Our Lady of Hartley Catholic Primary, Hartley, Longfield 0.7 miles, Hartley Primary 0.9 miles

Secondary Schools: Longfield Academy 0.0 miles, Helen



### Transport Information

Train Stations: Longfield 0.3 miles, Meopham 2.4 miles, Farningham Road 3.1 miles



### Address

The Chase, Main Road, Longfield, Kent, DA3



### Directions

For directions to this property please contact us.





*Wards*  
Helping you move forwards

Call New Ash Green Branch 01474 872466 ■ [wardsofkent.co.uk](http://wardsofkent.co.uk)



- Legal advice should be taken to verify fixtures/fittings, planning, alterations and/or lease details
- Appliances & services are untested, dimensions are approximate and floor plans are not to scale
- Through a Homewise Home For Life Plan people aged 60+ can secure this property for up to 59% less, by purchasing a Lifetime Lease.

EPC RATING

CURRENT:	POTENTIAL:
C(30)	B(38)

13325842/20240511/SB/DF