



Price
£550,000

Freehold

4x  2x  2x 

**Spring Cross, New Ash
Green, Longfield, Kent,
DA3**

OVER 60?

Secure this property
for up to **59% less!**



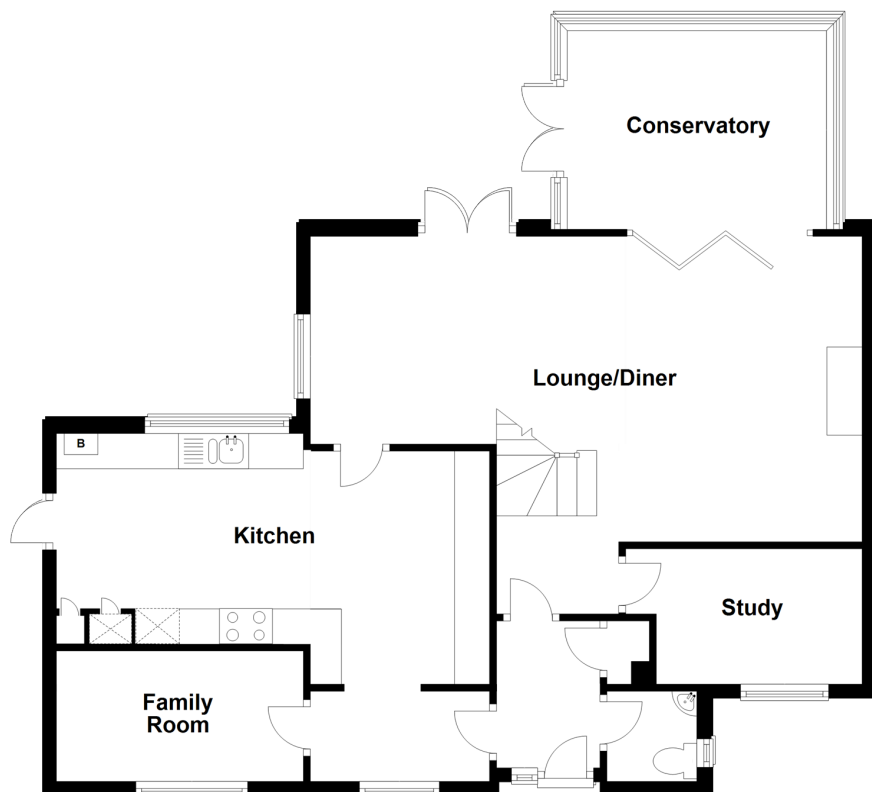
Video Tour available

Wards

Helping you move forwards

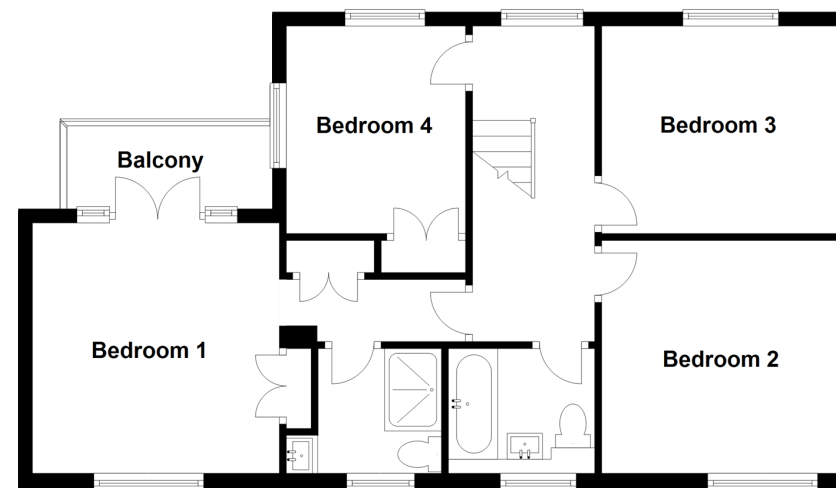
Ground Floor

Approx. 85.7 sq. metres (922.3 sq. feet)



First Floor

Approx. 62.7 sq. metres (674.8 sq. feet)



Accommodation

GROUND FLOOR

Entrance Hall

Downstairs Toilet

Study: 10'1 x 5'8 (3.08m x 1.73m)

Lounge/Diner: 17'8 x 16'11 (5.39m x 5.16m) plus 26'3 x 9'10 (8.01m x 3.00m)

Kitchen: 20'5 x 10'9 (6.23m x 3.28m)

Family Room: 10'2 x 6'11 (3.10m x 2.11m)

Conservatory

FIRST FLOOR

Landing

Bedroom 1: 11'11 x 10'4 (3.63m x 3.15m)

En-suite Shower Room: 7'8 x 5'11 (2.34m x 1.80m)

Balcony: 10'9 x 2'9 (3.28m x 0.84m)

Bedroom 2: 11'4 x 10'6 (3.46m x 3.20m)

Bedroom 3: 10'6 x 9'1 (3.20m x 2.77m)

Bedroom 4: 9'3 x 9'1 (2.82m x 2.77m)

Bathroom: 7'2 x 5'11 (2.19m x 1.80m)

OUTSIDE

Rear Garden

Double Garage



Main features

- Superb and spacious extended link detached family house
- Double garage en-bloc
- En-suite shower room
- Versatile layout with the addition of 2 extra downstairs rooms
- Secluded, low maintenance rear garden
- Balcony to main bedroom for extra outside space to enjoy



Nearest Schools

Primary Schools: New Ash Green Primary 0.8 miles, Hartley Primary 2.0 miles, Fawkham C of E Voluntary Controlled Primary 2.3 miles
Secondary Schools: Meopham School 2.6 miles, Longfield Academy 3.3 miles, Helen Allison School 3.7 miles



Transport Information

Train Stations: Longfield 2.9 miles, Meopham 3.8 miles, Sole Street 3.9 miles



Address

Spring Cross, New Ash Green, Longfield, Kent, DA3



Directions

For directions to this property please contact us.



Wards
Helping you move forwards

Call New Ash Green Branch 01474 872466 ■ wardsofkent.co.uk



- Legal advice should be taken to verify fixtures/fittings, planning, alterations and/or lease details
- Appliances & services are untested, dimensions are approximate and floor plans are not to scale
- Through a Homewise Home For Life Plan people aged 60+ can secure this property for up to 59% less, by purchasing a Lifetime Lease.



13418827/20231020/SB/CH