



Price

£750,000

Freehold

4x  2x  2x 

**School Lane, Meopham,
Kent, DA13**

OVER 60?

Secure this property
for up to **59% less!**

Wards
Helping you move forwards

Accommodation

GROUND FLOOR

Hallway

Cloakroom: 6'5 x 2'11 (1.96m x 0.89m)

Lounge: 20'11 x 16'6 (6.38m x 5.03m)

Study: 12'6 x 9'1 (3.81m x 2.77m)

Kitchen/Diner: 20'10 x 13'3 (6.35m x 4.04m)

FIRST FLOOR

Landing

Bedroom 1: 17'10 x 13'3 (5.44m x 4.04m)

Ensuite Shower Room: 7'10 x 5'4 (2.39m x 1.63m)

Bedroom 2: 13'3 x 10'5 (4.04m x 3.18m)

Bedroom 3: 13'3 x 7'2 (4.04m x 2.19m)

Bedroom 4: 9'3 x 9'3 (2.82m x 2.82m)

Bathroom: 7'11 x 6'5 (2.41m x 1.96m)

OUTBUILDINGS

Detached Double Garage: 19'1 x 18'9 (5.82m x 5.72m)

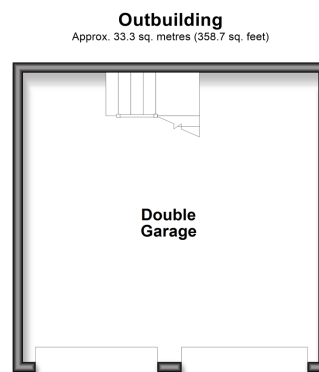
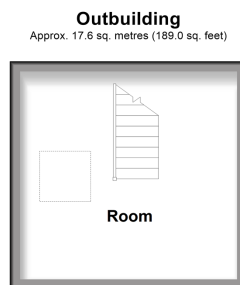
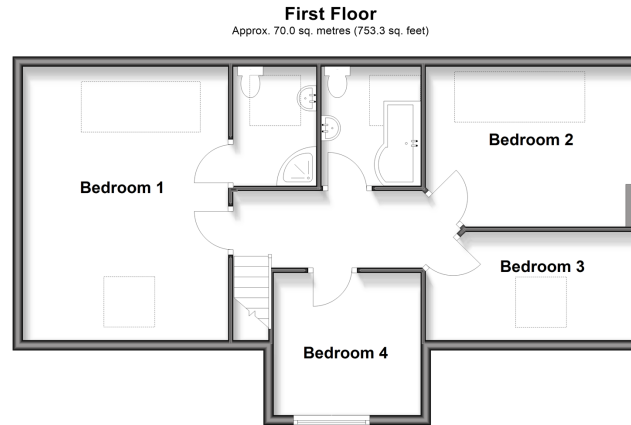
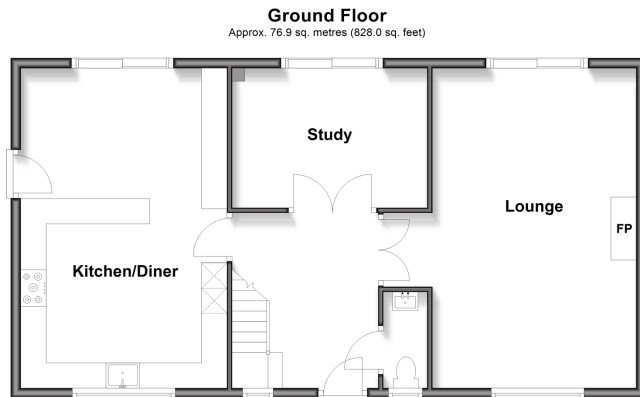
Room

OUTSIDE

Driveway

Front Garden

Rear Garden





Main features

- Impressive electric gated entrance with telecom access
- Generous fronted driveway leading to detached double garage
- Extensive and secluded rear garden
- Rural location offering tranquil surroundings and picturesque walks
- Ideal family home boasting well proportioned bedrooms



Nearest Schools

Primary Schools: Culverstone Green Primary 0.5 miles, Vigo Village School 0.7 miles, Trottiscliffe C of E Primary 1.6 miles, Meopham School 1.9 miles, Helen Allison School 2.4 miles, Wrotham School 3.4 miles, Grange Park School 3.4 miles



Transport Information

Train Stations: Sole Street 3.0 miles, Meopham 3.1 miles, Halling 3.8 miles



Address

School Lane, Meopham, Kent, DA13



Directions

For directions to this property please contact us.



Call Meopham Branch 01474 813100 ■ wardsofkent.co.uk



■ Legal advice should be taken to verify fixtures/fittings, planning, alterations and/or lease details ■ Appliances & services are untested, dimensions are approximate and floor plans are not to scale
■ Through a Homewise Home For Life Plan people aged 60+ can secure this property for up to 59% less, by purchasing a Lifetime Lease



13326257/20260119/SB/KD