



Price
£700,000

Freehold

3x  1x  2x 

**Cheshunt Close,
Meopham, Kent, DA13**

OVER 60?

Secure this property
for up to **59% less!**

Wards
Helping you move forwards



Main features

- Large secluded corner plot garden
- Fantastic family home with ample scope to make improvements (subject to consents)
- Tucked away in quiet cul-de-sac, with driveway and garage
- Catchment area for fantastic schools and close to Meopham Station
- Peaceful and desirable area

Accommodation

GROUND FLOOR

Porch: 9'0 x 4'3 (2.75m x 1.30m)
 Hallway
 Cloakroom: 8'7 x 2'11 (2.62m x 0.89m)
 Lounge: 19'7 x 17'8 (5.97m x 5.39m)
 Dining Room: 11'10 x 9'11 (3.61m x 3.02m)
 Kitchen: 12'6 x 8'2 (3.81m x 2.49m)

FIRST FLOOR

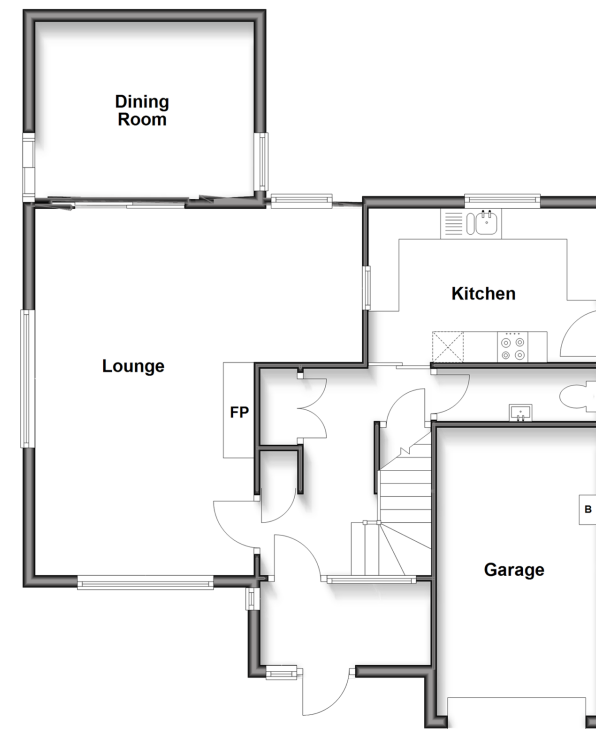
Landing
 Bedroom 1: 16'7 x 10'9 (5.06m x 3.28m)
 Bedroom 2: 18'9 x 8'8 (5.72m x 2.64m)
 Bedroom 3: 10'10 x 7'4 (3.30m x 2.24m)
 Bathroom: 8'11 x 5'5 (2.72m x 1.65m)

OUTSIDE

Garage
 Driveway
 Front Garden
 Rear Garden
 Side Garden

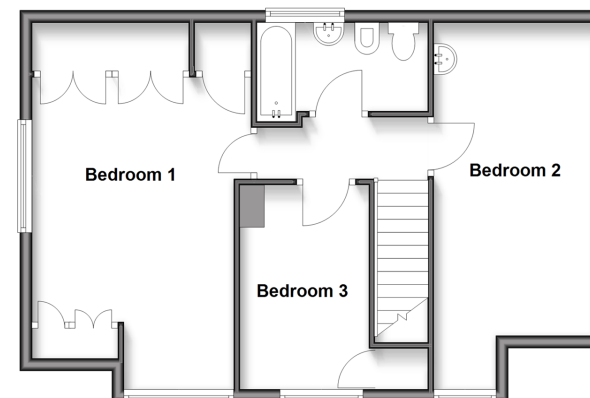
Ground Floor

Approx. 76.3 sq. metres (820.9 sq. feet)



First Floor

Approx. 54.0 sq. metres (581.3 sq. feet)



Call Meopham - 01474 813100 ■ wardsof Kent.co.uk

- Legal advice should be taken to verify fixtures/fittings, planning, alterations and/or lease details
- Appliances & services are untested, dimensions are approximate and floor plans are not to scale
- Through a Homewise Home For Life Plan people aged 60+ can secure this property for up to 59% less, by purchasing a Lifetime Lease.



13326175/20250725/SB/KD