



Price
£375,000

Freehold

2x  1x  2x 

**Strand Close, Meopham,
Kent, DA13**

OVER 60?

Secure this property
for up to **59% less!**

Wards
Helping you move forwards



Main features

- Great size property with double bedrooms and spacious, light and airy landing
- Large driveway to the front
- Ideal property for first time buyers
- Short walk away from Meopham Station, perfect for commuters
- Close to local amenities, schools and motorway links

Accommodation

GROUND FLOOR

Porch: 4'5 x 2'10 (1.35m x 0.86m)

Hallway

Lounge: 14'6 x 10'7 (4.42m x 3.23m)

Dining Room: 10'8 x 9'9 (3.25m x 2.97m)

Kitchen: 9'9 x 9'8 (2.97m x 2.95m)

Utility Room: 8'2 x 4'0 (2.49m x 1.22m)

FIRST FLOOR

Landing

Bedroom 1: 14'9 x 10'1 (4.50m x 3.08m)

Bedroom 2: 14'10 x 10'5 (4.52m x 3.18m)

Bathroom: 7'6 x 5'8 (2.29m x 1.73m)

OUTBUILDING

Shed

OUTSIDE

Driveway

Front Garden

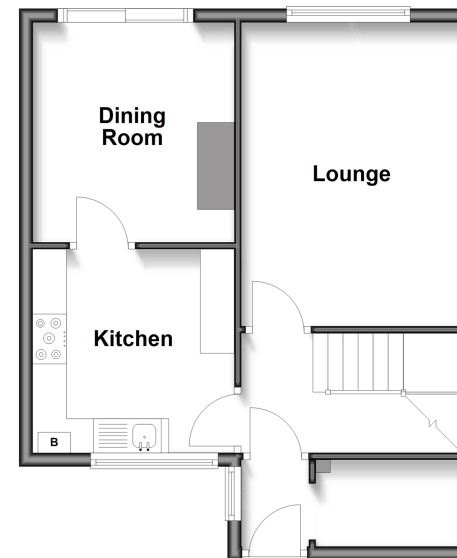
Rear Garden

Call Meopham - 01474 813100 ■ wardsofKent.co.uk

- If buying to let, the energy rating will need to be improved to at least 'E' rating before you can let the property
- Legal advice should be taken to verify fixtures/fittings, planning, alterations and/or lease details
- Appliances & services are untested, dimensions are approximate and floor plans are not to scale
- Through a Homewise Home For Life Plan people aged 60+ can secure this property for up to 59% less, by purchasing a Lifetime Lease.

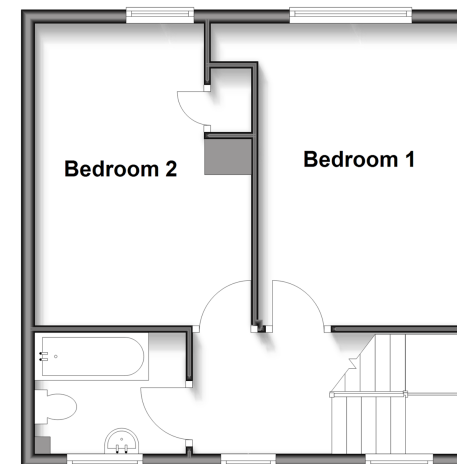
Ground Floor

Approx. 44.2 sq. metres (475.7 sq. feet)



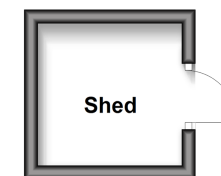
First Floor

Approx. 39.9 sq. metres (429.4 sq. feet)



Outbuilding

Approx. 4.4 sq. metres (47.6 sq. feet)



13320854/20250603/SB/KD