



Price

£600,000

Freehold

3x  2x  1x 

**Fairview Road, Istead
Rise, Kent, DA13**

OVER 60?

Secure this property
for up to **59% less!**

Wards
Helping you move forwards



Main features

- Incredibly spacious family home with ensuite and large garden
- Refurbished to an impeccable standard by current owners
- Ample off road parking to the front, situated on highly desirable road
- Close to Meopham Station
- Good schools and amenities nearby

Accommodation

GROUND FLOOR

Hallway

Cloakroom: 9'0 x 5'4 (2.75m x 1.63m)

Lounge: 15'9 x 13'9 (4.80m x 4.19m)

Summer Area: 12'3 x 10'0 (3.74m x 3.05m)

Dining Area: 8'8 x 7'9 (2.64m x 2.36m)

Kitchen: 15'4 x 8'10 (4.68m x 2.69m)

Bedroom 1: 14'8 x 11'1 (4.47m x 3.38m)

Ensuite Shower Room: 6'10 x 5'2 (2.08m x 1.58m)

Bedroom 2: 15'4 x 8'11 (4.68m x 2.72m)

Bedroom 3: 9'9 x 8'11 (2.97m x 2.72m)

Bathroom: 7'10 x 6'1 (2.39m x 1.86m)

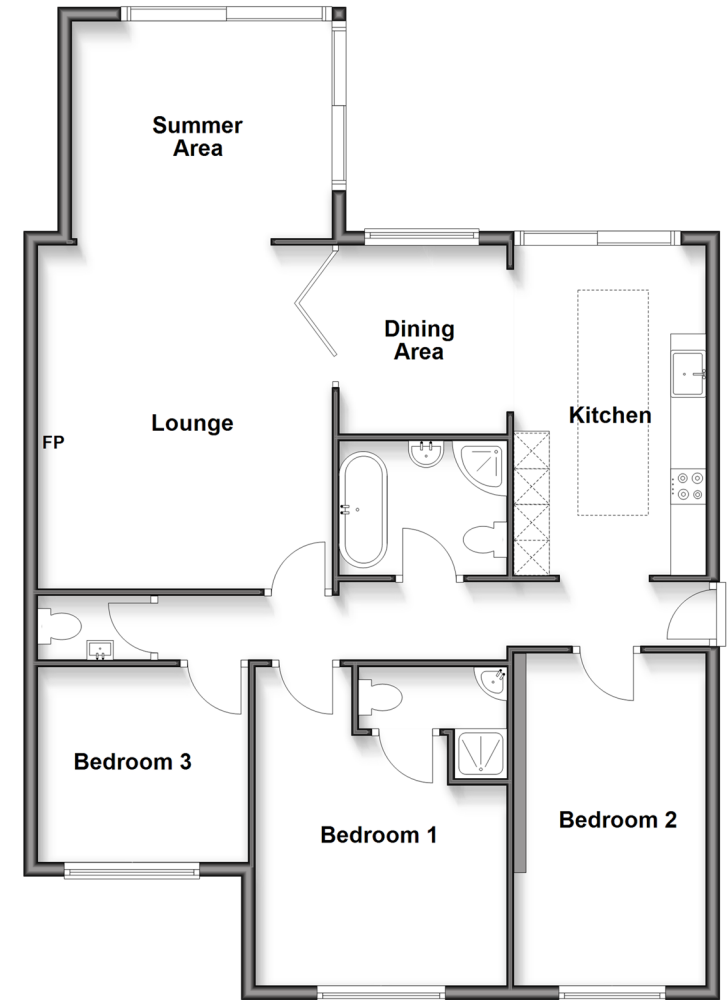
OUTSIDE

Driveway

Front Garden

Rear Garden

Ground Floor
Approx. 106.4 sq. metres (1145.3 sq. feet)



Call Meopham - 01474 813100 ■ wardsof Kent.co.uk

- Legal advice should be taken to verify fixtures/fittings, planning, alterations and/or lease details
- Appliances & services are untested, dimensions are approximate and floor plans are not to scale
- Through a Homewise Home For Life Plan people aged 60+ can secure this property for up to 59% less, by purchasing a Lifetime Lease.



13325377/20250611/SB/KD