



Price
£800,000

Freehold

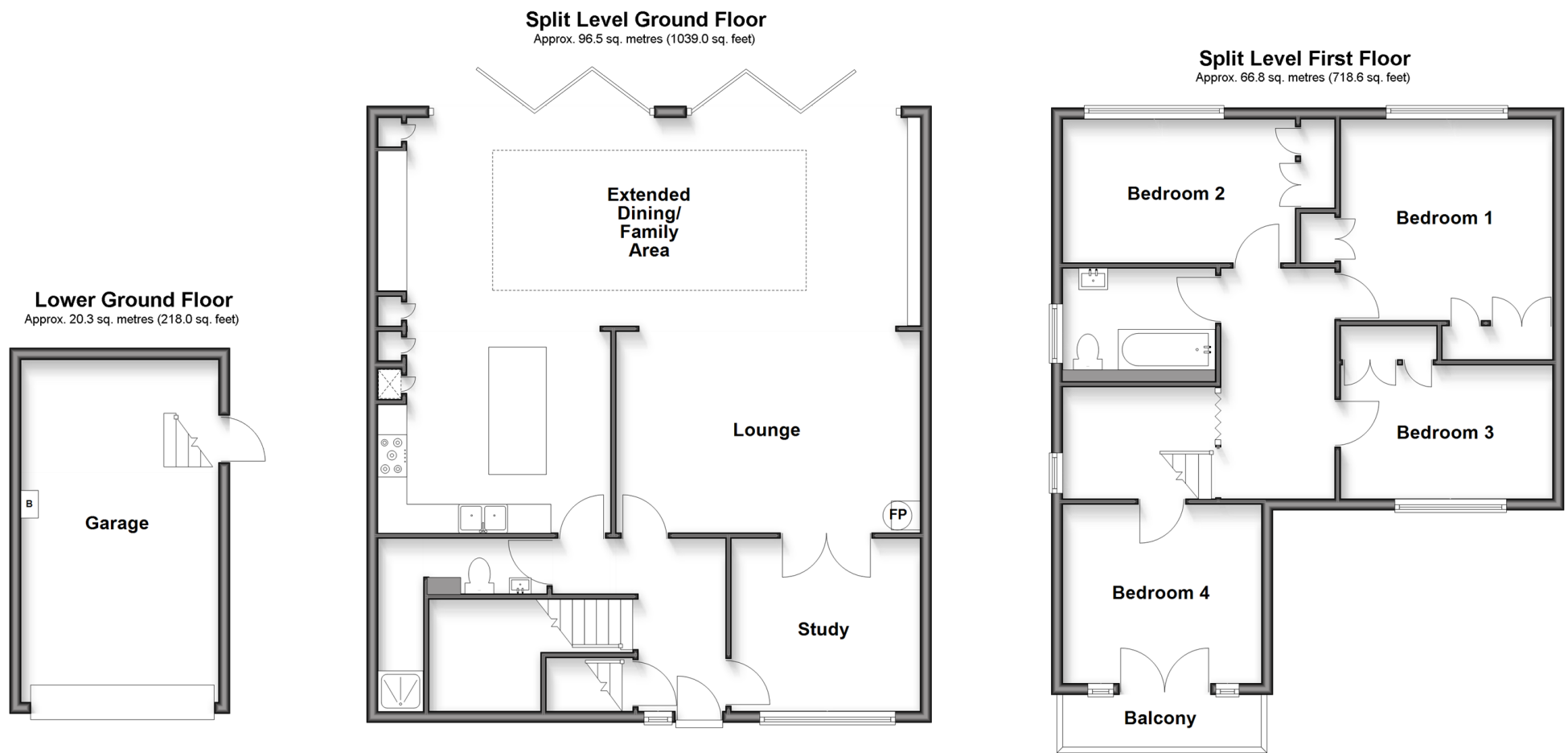
4x  2x  2x 

**Round Street, Sole
Street, Kent, DA13**

OVER 60?

Secure this property
for up to **59% less!**

Wards
Helping you move forwards



Accommodation

SPLIT LEVEL GROUND FLOOR

Hallway

Study: 10'8 x 9'9 (3.25m x 2.97m)

Lounge: 17'1 x 11'9 (5.21m x 3.58m)

Extended Dining/Family Area: 29'2 x 11'10 (8.90m x 3.61m)

Kitchen: 12'6 x 11'3 (3.81m x 3.43m)

Shower Room: 9'4 x 8'10 (2.85m x 2.69m)

LOWER GROUND FLOOR

Garage

SPLIT LEVEL FIRST FLOOR

Landing

Bedroom 1: 12'4 x 11'11 (3.76m x 3.63m)

Bedroom 2: 12'1 x 9'2 (3.69m x 2.80m)

Bedroom 3: 11'10 x 7'5 (3.61m x 2.26m)

Bedroom 4: 10'1 x 9'4 (3.08m x 2.85m)

Bathroom: 8'8 x 5'5 (2.64m x 1.65m)

OUTSIDE

Driveway

Front Garden

Rear Garden



Main features

- Spectacular property in a beautiful setting with stunning views from front and rear
- Short drive to Sole Street Station
- Walker's paradise with fields nearby
- Large rear extension with ample space to entertain friends and family
- Driveway for multiple cars and garage



Nearest Schools

Primary Schools: Cobham Primary 1.0 miles, Meopham Community Primary 1.3 miles, Singlewell Primary 1.4 miles

Secondary Schools: Helen Allison School 1.3 miles, Cobham Hall 1.5 miles, Meopham School 1.7 miles



Transport Information

Train Stations: Sole Street 0.5 miles, Meopham 0.7 miles, Longfield 3.3 miles



Address

Round Street, Sole Street, Kent, DA13



Directions

For directions to this property please contact us.



Call Meopham Branch 01474 813100 ■ wardsofkent.co.uk



- Legal advice should be taken to verify fixtures/fittings, planning, alterations and/or lease details
- Appliances & services are untested, dimensions are approximate and floor plans are not to scale
- Through a Homewise Home For Life Plan people aged 60+ can secure this property for up to 59% less, by purchasing a Lifetime Lease.



13326103/20250425/SB/KD