



Price

£700,000

Freehold

3x  2x  1x 

**Orchard Drive,
Meopham, Kent, DA13**

OVER 60?

Secure this property
for up to **59% less!**

Wards
Helping you move forwards



Main features

- Very short walk to Meopham Station
- Underfloor heating throughout the property
- Good local primary schools nearby
- Large private garden with stunning countryside views
- Open plan layout and recently refurbished with no work required

Accommodation

GROUND FLOOR

Hallway

Lounge: 21'3 x 15'2 (6.48m x 4.63m)

Kitchen: 15'5 x 14'9 (4.70m x 4.50m)

Utility Room: 6'0 x 5'3 (1.83m x 1.60m)

Bedroom 1: 12'5 x 10'4 (3.79m x 3.15m)

Bedroom 2: 14'11 x 8'10 (4.55m x 2.69m)

Bedroom 3: 12'1 x 8'9 (3.69m x 2.67m)

Bathroom: 14'7 x 6'2 (4.45m x 1.88m)

Shower Room: 5'5 x 5'3 (1.65m x 1.60m)

OUTSIDE

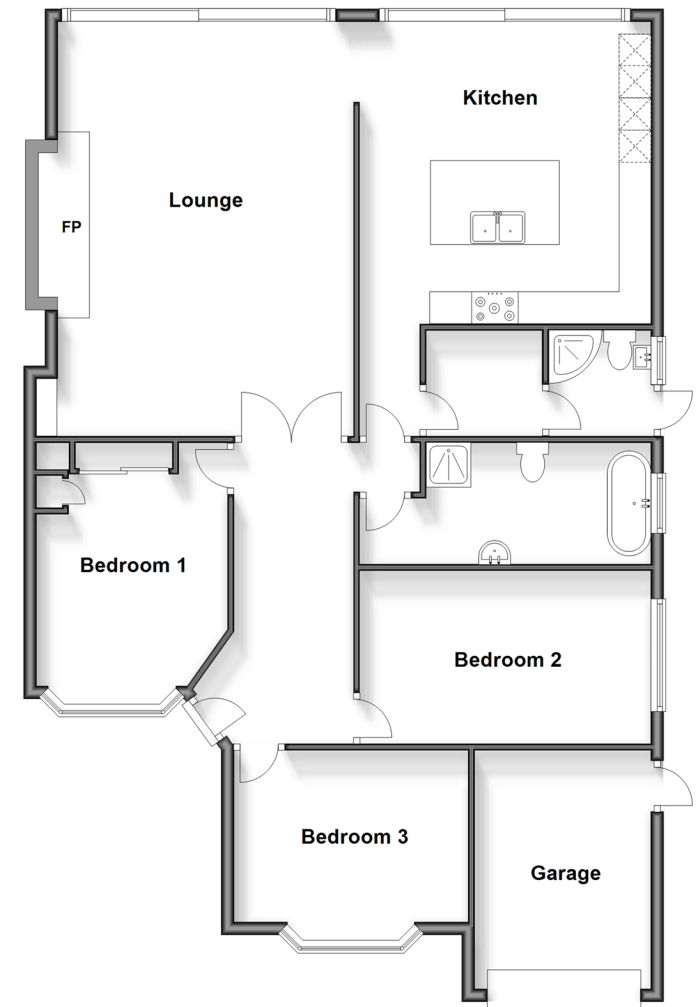
Garage

Driveway

Front Garden

Rear Garden

Ground Floor
Approx. 125.0 sq. metres (1345.3 sq. feet)



Call Meopham - 01474 813100 ■ wardsof Kent.co.uk

- Legal advice should be taken to verify fixtures/fittings, planning, alterations and/or lease details
- Appliances & services are untested, dimensions are approximate and floor plans are not to scale
- Through a Homewise Home For Life Plan people aged 60+ can secure this property for up to 59% less, by purchasing a Lifetime Lease.



13324316/20250103/HF/KD